



AUSTRALIAN BUREAU OF STATISTICS

CANBERRA

**LABOUR MOBILITY
AUSTRALIA**

DURING THE YEAR ENDING

FEBRUARY 1985

CATALOGUE NO. 6209.0

EMBARGOED UNTIL 11.30 A.M. 18 JULY 1985

**LABOUR MOBILITY, AUSTRALIA
DURING THE YEAR ENDING
FEBRUARY 1985**

R. J. CAMERON
Australian Statistician

© Commonwealth of Australia 1985

PHONE INQUIRIES	<i>for more information about these statistics</i> —contact Mr Geoff Winter on Canberra (062) 52 6661 or any of our State offices. <i>other inquiries including copies of publications</i> —contact Information Services on Canberra (062) 52 6627 or in any of our State offices.
MAIL INQUIRIES	<i>write to</i> Information Services, ABS, P.O. Box 10, Belconnen, A.C.T. 2616 or any of our State offices.

CONTENTS

<i>Table</i>		<i>Page</i>
. .	Explanatory notes	1
. .	Summary of findings	3
1.	Persons who worked at some time during the reference period: labour mobility and sex, February 1976 to February 1985	6
	Persons who had a job at the time of the survey	
2.	Mobility, industry divisions, occupation groups and sex, February 1976 to February 1985	6
3.	Duration of current job and sex, February 1976 to February 1985	7
	Persons who worked at some time during the year ending February 1985	
4.	Summary of labour mobility and sex	8
	Number of employers or businesses and sex—	
5.	Change in locality	8
6.	Age and whether had a job at February 1985	9
7.	Current labour force status, industry and occupation	9
8.	Labour mobility, industry divisions and sex	10
9.	Labour mobility, major occupation groups and sex	11
	Persons who left a job during the year ending February 1985	
	Reason for leaving—	
10.	Industry of job left	12
11.	Occupation of job left	12
12.	Family status and sex	13
13.	Duration of job left and sex	14
14.	Status of worker in job left, labour force status at February 1985 and sex	15
15.	Age, marital status and sex	16
	Duration of job left and sex—	
16.	Age	17
17.	Educational attainment	18
	Persons who had a job at February 1985	
	Duration of current job—	
18.	Age and sex	19
19.	Educational attainment and sex	19
20.	Industry	20
21.	Occupation	20
. .	Additional tables	21
. .	Technical note	22

EXPLANATORY NOTES

Introduction

The monthly Population Survey (which is described in *The Labour Force, Australia* (6203.0)) comprises the monthly labour force survey and supplementary topics. This publication contains some results of a supplementary survey run in association with the February 1985 labour force survey conducted throughout Australia.

2. Of the respondents to the labour force survey, those who fell within the scope of the supplementary were asked additional questions. This subset of respondents was asked about their labour mobility during the year up to the end of the week prior to interview in February 1985. Specific questions related to the duration of current job, whether respondents had changed jobs or not and the number of jobs held during the period.

Scope

3. The scope of this supplementary survey was the same as that used for the labour force survey (described in full in *The Labour Force, Australia* (6203.0)), except that it excluded students boarding at school, some patients in hospitals and sanatoria and inmates of jails, reformatories, etc.

4. The estimates relate to persons covered by the survey in February 1985. Because of emigration, deaths and other exits not all persons with labour force experience during the period were covered. Labour mobility may relate to experience outside Australia.

Definitions

5. It is impractical to obtain information relating to a whole year which is strictly comparable with that obtained in the monthly labour force survey for which the reference period is one week. The definitions used in determining the labour force status of persons in the monthly survey depend on a detailed set of questions asked about a person's labour force activity during the reference period. For the survey of labour mobility a person is assigned to a labour force category for each of the weeks in the year on the basis of a more limited set of questions. It is for this reason that the terms *worked* and *looked for work* are used in this survey rather than the rigidly defined terms *employed* and *unemployed* used in the monthly labour force survey.

6. Persons in the *labour force* are those persons who, *for those weeks*, reported having either worked or looked for work as defined in paragraphs 7 and 8.

7. Persons who *worked* are those persons who, *for those weeks*, reported having either worked or been on paid leave. Periods of one week or more on strike or time off without pay are not classified as worked.

8. Persons who *looked for work* are those persons who, *for those weeks*, reported having been out of work and looking for a job.

9. Persons *out of the labour force* are those who, *during any week*, neither worked nor looked for work as defined in paragraphs 7 and 8.

10. For the purposes of the survey, a *job* is defined as:

- (a) employment as a wage or salary earner (or unpaid family helper) by a particular employer, in a particular locality; or
- (b) self-employment (with or without employees) in a particular locality.

11. *Locality*. In capital cities and major towns each suburb is considered to be a different locality.

12. *Job mobility* is defined as a change of job. A *change of job* may involve a change of employer without a change of job location; a change of location without a change of employer; or a change in both employer and location. For example, the movement of an employer's operations to premises in a different location would entail a change of job for employees who moved to the new location. Promotion or transfer of an employee which involves a move to premises in a different location would also constitute a change of job. It should be noted, however, that for a person who works at different sites for the same employer (for example, a construction worker), his base of operations (i.e. his employer's office, depot, yard, etc.) is considered to be his place of work.

13. Persons are classified as *married* if they are reported as being married (including de facto) and their spouse was a usual resident of the household at the time of the survey. The *not-married* category includes persons who have never married, or are separated, widowed or divorced, as well as those who, although reported as being married, did not have a spouse who usually lived in the household.

14. *Family status* characteristics are explained in detail in *The Labour Force, Australia* (6203.0). It should be noted that they were not obtained for all persons included in the survey. Family information was not collected for the following persons (identified in tables as 'not family coded'):

- (a) all persons enumerated in non-private dwellings (including hotels, motels, hospitals and other institutions);
- (b) persons enumerated as visitors to, rather than usual residents of, private dwellings; and
- (c) where it was not possible to obtain family information relating to *all* the usual residents of a household, e.g. where one member of the family was a member of the permanent defence forces and therefore outside the scope of the survey.

Results of the survey

15. Additional tables available but not included in this publication are listed on page 21. A preliminary publication (6208.0) containing a summary of the results of the survey was released on 16 May 1985.

16. Results of similar surveys, the first conducted in November 1972, have been given in previous issues of this publication.

Discontinuities in the series

17. The estimates for surveys held from February 1983 are not strictly comparable with those obtained from previous surveys. The reference period for the February 1980 and prior surveys was the previous calendar year (e.g. 1 January to 31 December 1979). The reference period for the February 1981 and 1982 surveys was from the beginning of the previous February to the end of the week prior to interview. As interviews were conducted over the second and third week of February, the reference period could extend to 54 weeks. From the February 1983 survey onwards the reference period has been the 52 weeks up to the end of the week prior to interview. Due to the change in the reference period timing, some estimates, particularly those for groups who enter the labour force during the earlier months of the year (e.g. 15 to 19 year olds) will also be affected from the February 1981 survey onwards.

18. In the February 1981 survey, reason for leaving a job was only asked of persons who changed jobs. For all previous and subsequent surveys, reason for leaving a job was asked of the wider population of persons who left a job.

Reliability of the estimates

19. Estimates in this publication are subject to two sources of error:

- (a) *sampling error*: since the estimates are based on information obtained from occupants of a sample of dwellings they are subject to sampling variability; that is they may differ from the figures that would have been produced if all dwellings had been included in the survey. One measure of

the likely difference is given by the *standard error*. More information about this topic will be found in the Technical note.

- (b) *non-sampling error*: inaccuracies may occur because of imperfections in reporting by interviewers and respondents and errors made in the coding and processing of data. These inaccuracies may occur in any enumeration, whether it be a full count or a sample. Every effort is made to reduce the non-sampling error to a minimum by careful design of questionnaires, intensive training and supervision of interviewers and efficient operating procedures.

Related publications

20. Other ABS publications which may be of interest include:

The Labour Force, Australia (6203.0)—issued monthly (\$1.10, \$1.90 incl. postage)

Labour Force Experience, Australia, During the Year Ending February 1985, Preliminary (6205.0)

Internal Migration, Australia, 12 months ended 30 June 1984 (3408.0)

21. Current publications produced by the ABS are listed in the *Catalogue of Publications, Australia* (1101.0). The ABS also issues, on Tuesdays and Fridays, a *Publications Advice* (1105.0) which lists publications to be released in the next few days. The Catalogue and Publications Advice are available from any ABS office.

Symbols and other usages

- * subject to sampling variability too high for most practical uses. See paragraph 19 above.

.. not applicable

n.e.c. not elsewhere classified

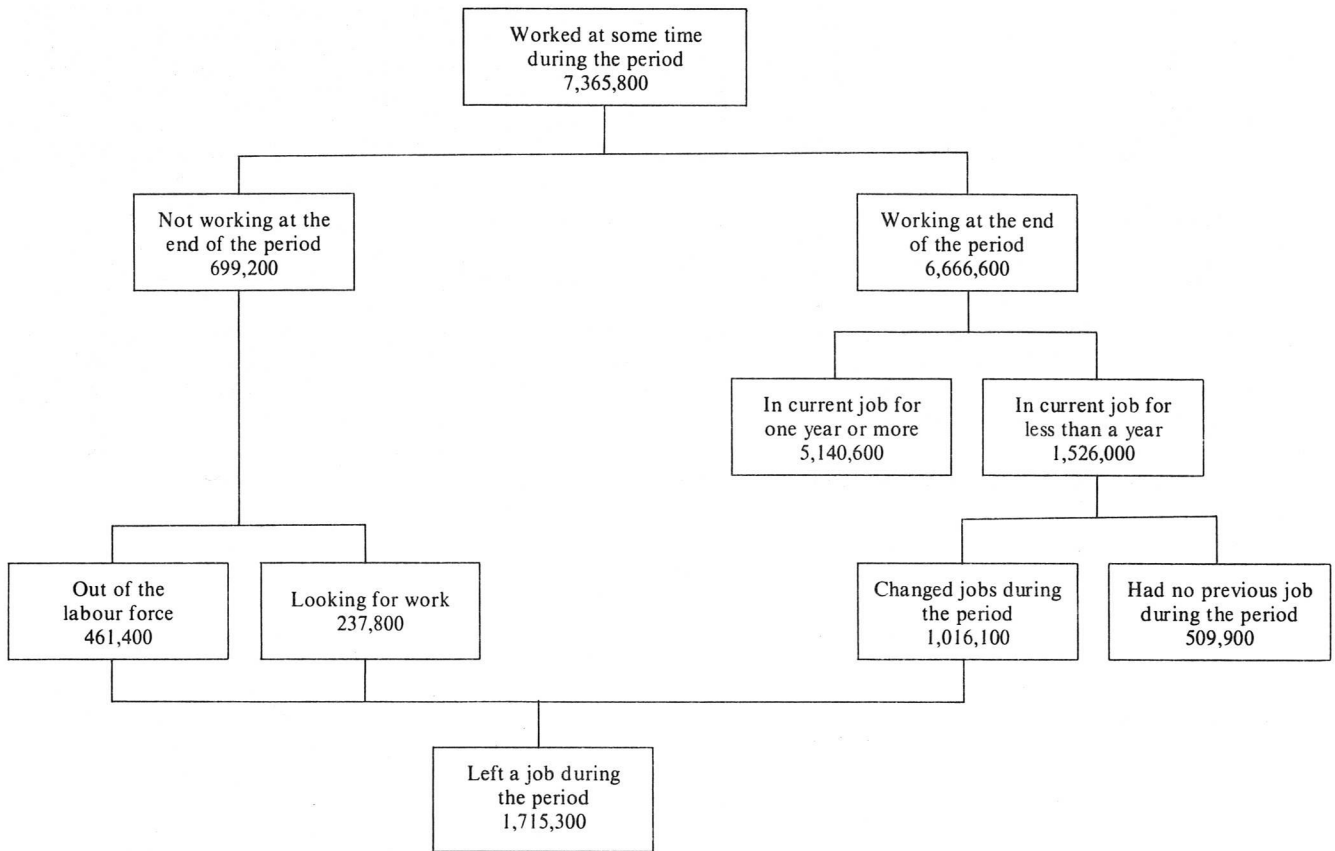
22. Because figures have been rounded, discrepancies may occur between sums of the component items and totals.

SUMMARY OF FINDINGS

7,365,800 persons worked at some time during the year ending February 1985, made up of 6,666,600 who were working in February 1985 and 699,200 who were not working. 5,140,600 persons had been in the same job for the whole 12-month period. The remaining 2,225,200 (about 30 per cent of those who had worked at some time during the year) had started or left a job during the year.

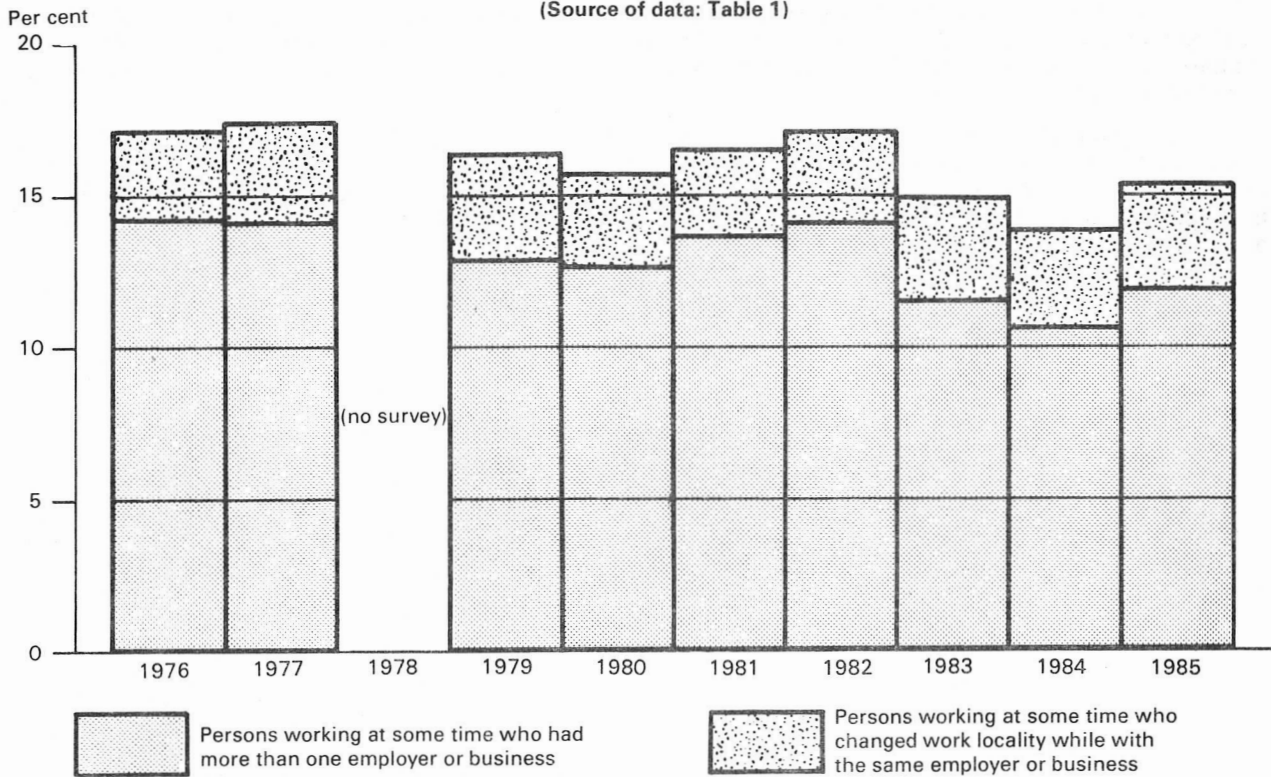
Less than half (1,016,100) of those who had started or left a job during the year had changed jobs, the remainder either moving into or out of a job; 237,800 had left a job and were looking for work in February 1985 and 461,400 had left the labour force. 509,900 were working in February 1985 having had no previous job during the year. 13.9 per cent of those who had left a job during the year were looking for work in February 1985 and 26.9 per cent were out of the labour force.

DIAGRAM 1. PERSONS WHO WORKED AT SOME TIME DURING THE YEAR ENDING FEBRUARY 1985



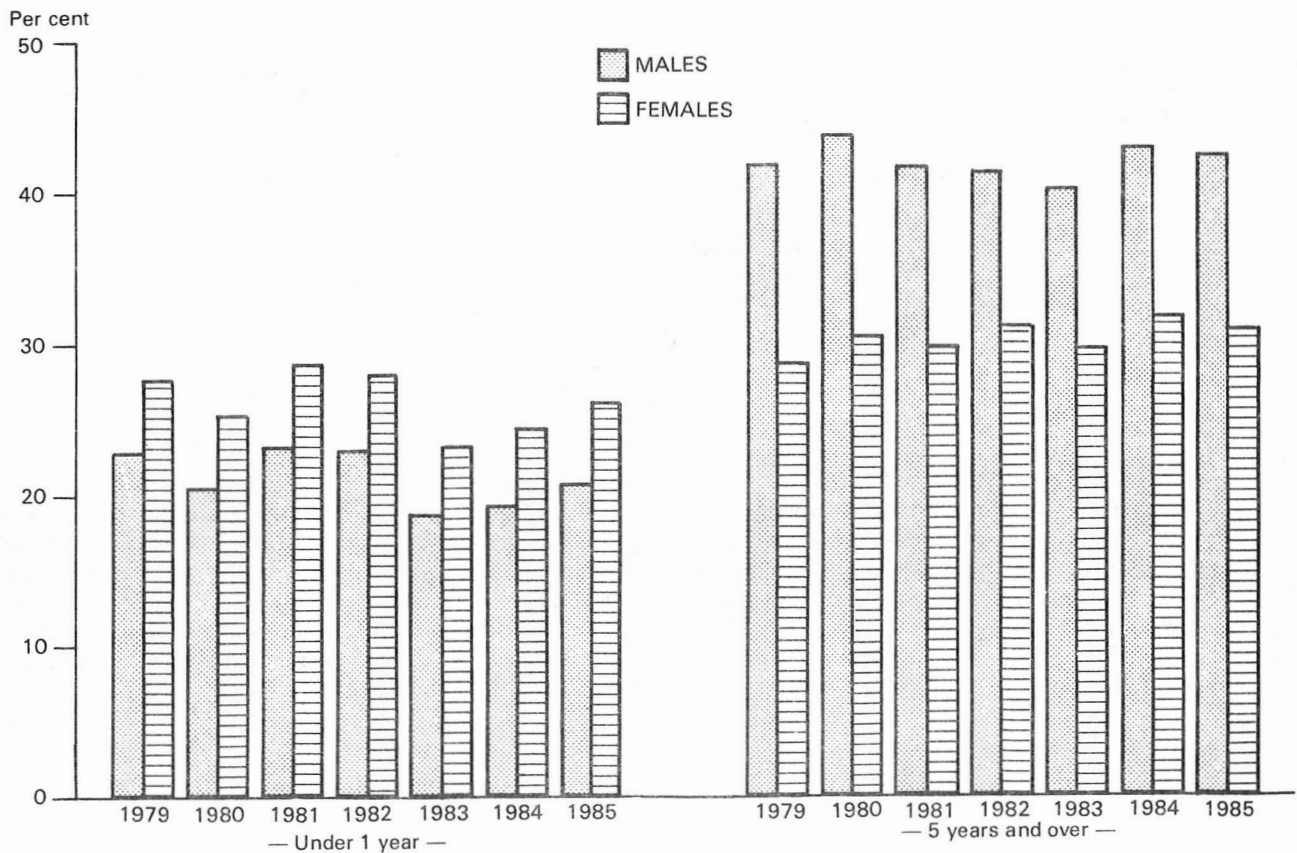
Job mobility may be defined as having more than one employer during a reference period or changing work location without changing employer. Of the 7,365,800 persons who worked at some time during the year ending February 1985, 15.3 per cent were job mobile by this definition, comprising 11.9 per cent who had more than one employer or business (including a small proportion who also separately changed work locality) and 3.4 per cent who changed work locality only. In the February 1982 survey these proportions were 17.1 per cent, 14.1 per cent and 3.0 per cent respectively. There was a steep decline in job mobility in the following two years with the proportion in this category reaching a low of 13.8 per cent in 1984 before increasing substantially in the 1985 survey.

DIAGRAM 2. PERSONS WHO WORKED AT SOME TIME DURING THE REFERENCE PERIOD: JOB MOBILITY, FEBRUARY 1976 TO FEBRUARY 1985
(Source of data: Table 1)



The length of time workers have spent in their current jobs has varied over time and between the sexes. The proportion of males who had worked in their current job for less than one year has always been significantly lower than that for females. Conversely, the proportion of males who had been in their current job for five years and over has always been much higher than the corresponding proportion for females.

DIAGRAM 3. PERSONS WHO HAD A JOB AT THE TIME OF THE SURVEY: DURATION OF CURRENT JOB
(Source of data: Table 3)

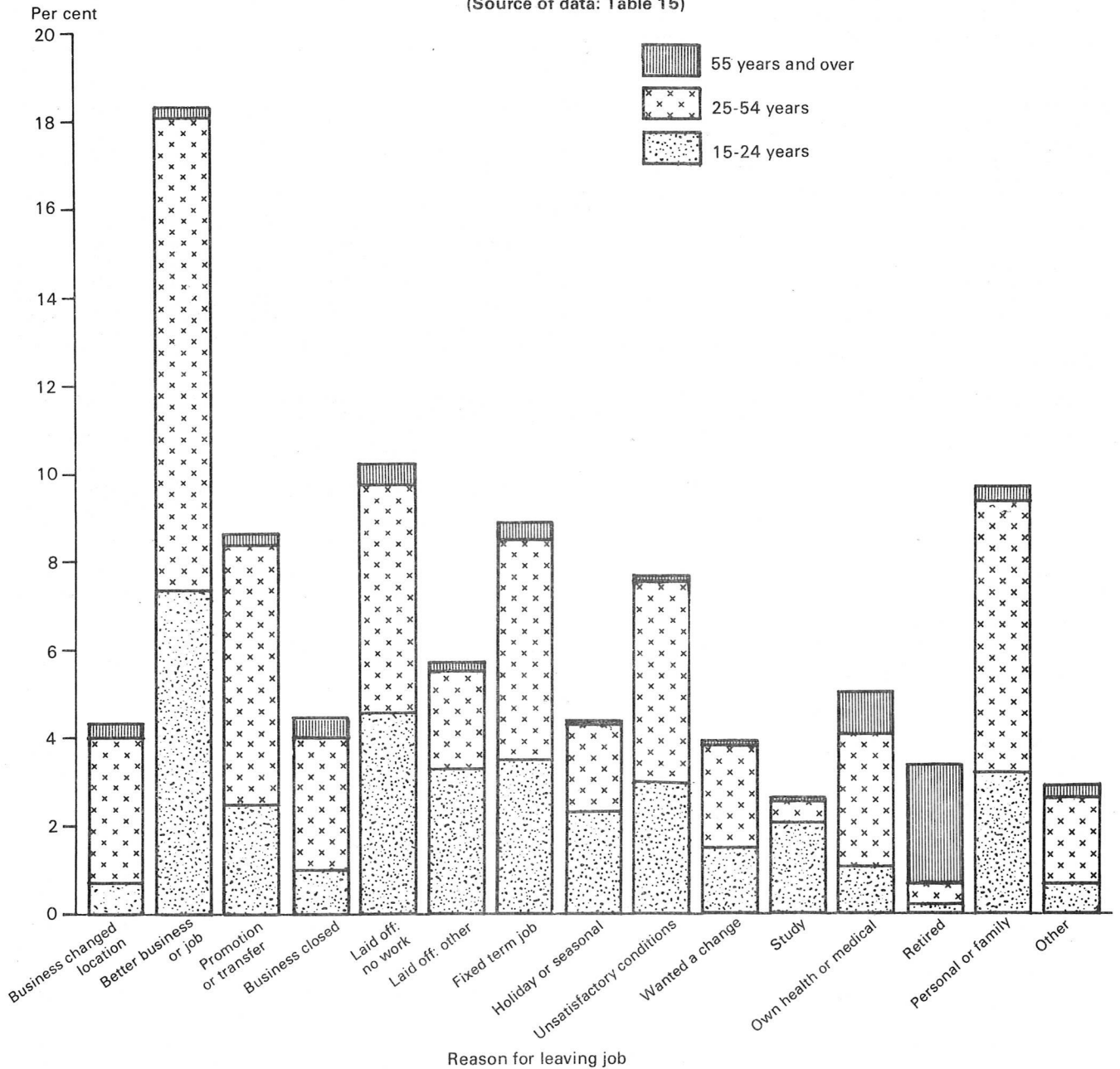


Persons who left a job

Of persons who left a job during the year ending February 1985—

- 37.0 per cent were younger persons (i.e. aged 15-24 years);
- half had held their previous job for less than one year;
- 38.6 per cent had left for involuntary reasons (business changed location, business closed, laid-off, fixed-term job and own health or medical reasons), of whom 29.5 per cent were spouses with children aged 0-14 years present in the family unit;
- 15.9 per cent left because they were laid off;
- 8.3 per cent left to go to a better business or job (of whom 39.8 per cent were younger persons).

DIAGRAM 4. PERSONS WHO LEFT A JOB DURING THE YEAR ENDING FEBRUARY 1985: REASON FOR LEAVING AND AGE
(Source of data: Table 15)



Among the 1,016,100 persons who changed jobs during the year there was a tendency to remain in the same industry division (58.6 per cent) and in the same major occupation group (69.2 per cent). There were 420,900 persons who changed industry divisions, of whom 85,500 (20.3 per cent) took jobs in the Wholesale and retail industry and 93,700 (22.3 per cent) left jobs in that industry. Other industries which had large flows of workers in and out were Manufacturing (65,000 entering and 72,100 leaving) and Finance, property and business services which gained 49,000 persons from, and lost 44,700 persons to, other industries. The major occupation groups most affected by gains from and losses to other occupation groups were Tradespersons, with an influx of 71,200 persons and an outflow of 64,800 persons; Salespersons for whom the corresponding figures were 48,200 and 56,200; and Clerical workers where there were gains of 49,500 and losses of 45,500 persons.

TABLE 1. PERSONS WHO WORKED AT SOME TIME DURING THE REFERENCE PERIOD : LABOUR MOBILITY, FEBRUARY 1976 TO FEBRUARY 1985
(per cent)

Whether changed employer or business and whether changed locality	Survey conducted in February—								
	1976(a)	1977(a)	1979(a)	1980(a)	1981(b)	1982(b)	1983(b)	1984(b)	1985(b)
MALES									
Job mobile	18.6	18.7	17.8	16.7	17.4	18.0	15.6	14.4	15.5
Changed employer but not locality	14.2	13.9	12.7	12.0	13.5	13.7	10.2	9.8	10.7
Changed both employer and locality	0.8	1.0	1.2	1.3	0.8	0.9	1.5	1.0	1.2
Changed locality but not employer	3.5	3.8	3.9	3.5	3.1	3.3	3.9	3.6	3.7
Did not change employer or locality	81.4	81.3	82.2	83.3	82.6	82.0	84.4	85.6	84.5
FEMALES									
Job mobile	15.0	15.2	13.8	14.1	15.0	15.7	13.7	12.8	15.0
Changed employer but not locality	12.4	12.2	10.4	10.3	11.8	12.5	9.8	9.5	11.1
Changed both employer and locality	0.5	0.6	0.8	1.3	0.7	0.8	1.1	0.7	0.9
Changed locality but not employer	2.1	2.5	2.6	2.5	2.5	2.5	2.8	2.5	3.0
Did not change employer or locality	85.0	84.8	86.2	85.9	85.0	84.3	86.3	87.2	85.0
PERSONS									
Job mobile	17.2	17.4	16.3	15.7	16.5	17.1	14.9	13.8	15.3
Changed employer but not locality	13.5	13.3	11.8	11.3	12.8	13.2	10.1	9.7	10.8
Changed both employer and locality	0.7	0.8	1.1	1.3	0.8	0.9	1.4	0.9	1.1
Changed locality but not employer	3.0	3.3	3.4	3.1	2.9	3.0	3.4	3.2	3.4
Did not change employer or locality	82.8	82.6	83.7	84.3	83.5	82.9	85.1	86.2	84.7

(a) As a proportion of persons in the survey who had worked at some time during the calendar year prior to the survey. (b) As a proportion of persons in the survey who had worked at some time during the previous twelve months.

TABLE 2. PERSONS WHO HAD A JOB AT THE TIME OF THE SURVEY : MOBILITY (a), INDUSTRY DIVISIONS AND MAJOR OCCUPATION GROUPS, FEBRUARY 1979 TO FEBRUARY 1985

	Survey conducted in February—							1985(c)
	1979(b)	1980(b)	1981(c)	1982(c)	1983(c)	1984(c)		
—per cent—								
(' 000)								
MALES								
<i>Total</i>	100.0	100.0	100.0	100.0	100.0	100.0	100.0	4,100.3
In current job for one year or more	77.1	79.5	76.9	77.0	81.2	80.6	79.3	3,250.1
In current job for less than one year	22.9	20.5	23.1	23.0	18.8	19.4	20.7	850.2
Had no other job in the period	6.0	6.3	6.3	5.8	3.9	5.3	5.4	220.5
Changed jobs during the period	17.0	14.3	16.8	17.2	14.9	14.2	15.4	629.7
Changed industry division(a)	8.5	6.3	7.1	7.0	5.6	5.3	6.3	257.9
Did not change industry division(a)	8.5	8.0	9.7	10.2	9.3	8.9	9.1	371.7
Changed occupation group(a)	7.3	4.7	5.1	4.8	4.4	4.4	4.8	195.6
Did not change occupation group(a)	9.7	9.6	11.7	12.4	10.5	9.7	10.6	434.1
FEMALES								
<i>Total</i>	100.0	100.0	100.0	100.0	100.0	100.0	100.0	2,566.3
In current job for one year or more	72.4	74.7	71.3	72.0	76.7	75.5	73.7	1,890.5
In current job for less than one year	27.6	25.3	28.7	28.0	23.3	24.5	26.3	675.8
Had no other job in the period	13.8	12.8	13.7	12.3	9.9	11.5	11.3	289.4
Changed jobs during the period	13.8	12.5	15.1	15.7	13.4	12.9	15.1	386.4
Changed industry division(a)	7.7	5.3	6.6	7.0	5.4	5.2	6.3	162.9
Did not change industry division(a)	6.1	7.2	8.4	8.7	8.1	7.8	8.7	223.5
Changed occupation group(a)	5.8	3.9	4.8	5.0	4.2	4.0	4.6	116.9
Did not change occupation group(a)	8.0	8.6	10.3	10.6	9.3	8.9	10.5	269.5
PERSONS								
<i>Total</i>	100.0	100.0	100.0	100.0	100.0	100.0	100.0	6,666.6
In current job for one year or more	75.4	77.7	74.9	75.2	79.5	78.7	77.1	5,140.6
In current job for less than one year	24.6	22.3	25.1	24.8	20.5	21.3	22.9	1,526.0
Had no other job in the period	8.7	8.6	9.0	8.2	6.1	7.6	7.6	509.9
Changed jobs during the period	15.9	13.6	16.2	16.6	14.4	13.7	15.2	1,016.1
Changed industry division(a)	8.2	5.9	6.9	7.0	5.5	5.2	6.3	420.9
Did not change industry division(a)	7.6	7.7	9.3	9.6	8.8	8.5	8.9	595.2
Changed occupation group(a)	6.8	4.4	5.0	4.9	4.3	4.3	4.7	312.5
Did not change occupation group(a)	9.1	9.2	11.2	11.7	10.1	9.4	10.6	703.6

(a) As shown in Tables 8 and 9. (b) As a proportion of all persons working at the end of the calendar year prior to the survey. (c) As a proportion of all persons working at the time of the survey.

TABLE 3. PERSONS WHO HAD A JOB AT THE TIME OF THE SURVEY : DURATION OF CURRENT JOB, FEBRUARY 1979 TO FEBRUARY 1985

Duration of current job	Survey conducted in February—							1985 (' 000)
	1979(a)	1980(a)	1981	1982	1983	1984		
	—per cent—							
MALES								
Under 3 months	6.9	6.6	9.2	8.7	7.6	8.6	9.0	368.0
3 and under 6 months	6.9	5.3	5.6	5.8	4.0	4.4	4.4	182.3
6 and under 12 months	9.2	8.6	8.3	8.4	7.2	6.4	7.3	299.9
<i>Total under 1 year</i>	<i>22.9</i>	<i>20.5</i>	<i>23.1</i>	<i>23.0</i>	<i>18.8</i>	<i>19.4</i>	<i>20.7</i>	<i>850.2</i>
1 and under 2 years	12.2	12.5	12.6	12.2	13.0	10.1	11.6	474.2
2 and under 3 years	8.1	8.8	8.7	9.2	12.0	11.3	9.4	386.6
3 and under 5 years	14.9	14.2	14.1	14.1	16.0	16.2	15.7	644.7
5 years and over	41.9	43.9	41.6	41.5	40.3	43.0	42.5	1,744.6
<i>Total</i>	<i>100.0</i>	<i>100.0</i>	<i>100.0</i>	<i>100.0</i>	<i>100.0</i>	<i>100.0</i>	<i>100.0</i>	<i>4,100.3</i>
FEMALES								
Under 3 months	8.0	7.8	11.3	10.7	9.0	10.2	11.1	283.8
3 and under 6 months	7.8	6.2	6.7	7.2	5.3	5.6	6.4	165.3
6 and under 12 months	11.8	11.4	10.8	10.0	9.0	8.6	8.8	226.7
<i>Total under 1 year</i>	<i>27.6</i>	<i>25.3</i>	<i>28.8</i>	<i>28.0</i>	<i>23.3</i>	<i>24.5</i>	<i>26.3</i>	<i>675.8</i>
1 and under 2 years	15.7	15.8	16.0	15.2	15.8	13.9	14.5	371.3
2 and under 3 years	10.7	11.2	9.6	10.7	14.5	12.7	10.8	277.5
3 and under 5 years	17.1	17.1	15.8	15.1	16.7	17.0	17.4	445.7
5 years and over	28.8	30.5	29.9	31.1	29.8	31.9	31.0	796.1
<i>Total</i>	<i>100.0</i>	<i>100.0</i>	<i>100.0</i>	<i>100.0</i>	<i>100.0</i>	<i>100.0</i>	<i>100.0</i>	<i>2,566.3</i>
PERSONS								
Under 3 months	7.3	7.0	9.9	9.5	8.1	9.2	9.8	651.8
3 and under 6 months	7.2	5.6	6.0	6.3	4.5	4.9	5.2	347.5
6 and under 12 months	10.1	9.6	9.2	9.0	7.9	7.3	7.9	526.6
<i>Total under 1 year</i>	<i>24.6</i>	<i>22.3</i>	<i>25.1</i>	<i>24.8</i>	<i>20.5</i>	<i>21.3</i>	<i>22.9</i>	<i>1,526.0</i>
1 and under 2 years	13.4	13.7	13.8	13.3	14.0	11.6	12.7	845.5
2 and under 3 years	9.0	9.7	9.0	9.8	12.9	11.8	10.0	664.1
3 and under 5 years	15.7	15.3	14.7	14.4	16.2	16.5	16.4	1,090.4
5 years and over	37.3	39.0	37.3	37.6	36.4	38.8	38.1	2,540.6
<i>Total</i>	<i>100.0</i>	<i>100.0</i>	<i>100.0</i>	<i>100.0</i>	<i>100.0</i>	<i>100.0</i>	<i>100.0</i>	<i>6,666.6</i>

(a) For persons in the survey who were working at the end of the previous calendar year, time in job held at end of previous calendar year.

**TABLE 4. PERSONS WHO WORKED AT SOME TIME DURING THE YEAR ENDING FEBRUARY 1985:
SUMMARY OF LABOUR MOBILITY
(' 000)**

	<i>Married males</i>	<i>All males</i>	<i>Married females</i>	<i>All females</i>	<i>Persons</i>
Worked at some time during the year	2,882.0	4,410.8	1,773.0	2,955.0	7,365.8
Number of employers or businesses(a) during the year—					
1	2,611.6	3,888.3	1,623.4	2,599.2	6,487.5
2	211.6	397.7	125.3	284.2	681.9
3	40.7	82.1	15.4	46.6	128.7
4 and over	18.0	42.8	8.9	24.9	67.7
Did not have a job at February 1985	145.3	310.5	249.1	388.7	699.2
Had a job at February 1985	2,736.7	4,100.3	1,523.9	2,566.3	6,666.6
For one year or more in current job	2,317.7	3,250.1	1,213.2	1,890.5	5,140.6
For less than one year in current job	418.9	850.2	310.7	675.8	1,526.0
Did not have a previous job during the year	57.6	220.5	142.6	289.4	509.9
Had a previous job during the year	361.3	629.7	168.1	386.4	1,016.1
Left a job during the year	506.6	940.2	417.2	775.1	1,715.3
Did not leave a job during the year	2,375.3	3,470.6	1,355.8	2,179.9	5,650.5

(a) Not including second jobs of multiple jobholders.

**TABLE 5. PERSONS WHO WORKED AT SOME TIME DURING THE YEAR ENDING FEBRUARY 1985:
NUMBER OF EMPLOYERS OR BUSINESSES AND CHANGES IN LOCALITY
(' 000)**

<i>Change in locality</i>	<i>Had one employer or business</i>	<i>Had more than one employer or business(a)</i>				<i>Total</i>	<i>Total</i>
		<i>Number of employers or businesses</i>			<i>Total</i>		
		<i>2</i>	<i>3</i>	<i>4 and over</i>			
MALES							
Did not change locality	3,725.9	363.7	70.7	35.7	470.1	4,196.0	
Changed locality	162.4	34.0	11.4	7.0	52.4	214.8	
Number of changes—							
1	123.3	21.9	6.2	*	29.4	152.7	
2	16.6	5.8	*	*	11.3	27.9	
3	7.6	*	*	*	*	10.9	
4 and over	14.9	4.7	*	*	8.4	23.3	
Total	3,888.3	397.7	82.1	42.8	522.5	4,410.8	
FEMALES							
Did not change locality	2,510.3	265.7	41.7	20.7	328.1	2,838.4	
Changed locality	88.9	18.6	4.9	*	27.7	116.6	
Number of changes—							
1	69.9	14.3	*	*	17.7	87.6	
2 and over	19.0	*	*	*	10.1	29.0	
Total	2,599.2	284.2	46.6	24.9	355.8	2,955.0	
PERSONS							
Did not change locality	6,236.2	629.4	112.4	56.4	798.2	7,034.4	
Changed locality	251.3	52.5	16.3	11.3	80.1	331.4	
Number of changes—							
1	193.2	36.2	8.1	*	47.1	240.3	
2	24.6	8.4	5.6	*	17.0	41.5	
3	12.7	*	*	*	*	17.1	
4 and over	20.9	6.0	*	*	11.6	32.5	
Total	6,487.5	681.9	128.7	67.7	878.3	7,365.8	

(a) Not including second jobs of multiple jobholders.

TABLE 6. PERSONS WHO WORKED AT SOME TIME DURING THE YEAR ENDING FEBRUARY 1985: NUMBER OF EMPLOYERS OR BUSINESSES, AGE AND WHETHER HAD A JOB AT FEBRUARY 1985 ('000)

Age group (years)	Number of employers or businesses									
	Males					Females				
	1	2	3	4 and over	Total	1	2	3	4 and over	Total
HAD A JOB AT FEBRUARY 1985										
15-19	261.0	49.9	10.1	*	325.3	243.0	46.1	8.0	*	300.4
20-24	416.8	77.2	19.8	10.9	524.6	345.3	72.6	13.0	5.1	436.0
25-34	953.2	124.7	24.8	11.1	1,113.7	592.3	71.7	12.7	6.7	683.3
35-44	902.0	72.4	12.5	5.3	992.1	563.0	40.3	5.0	*	611.4
45-54	632.4	31.2	4.5	*	670.6	350.2	16.3	*	*	368.4
55-59	263.5	8.0	*	*	273.2	100.9	*	*	*	103.8
60-64	139.4	*	*	*	142.1	43.3	*	*	*	43.5
65 and over	57.3	*	*	*	58.5	19.3	*	*	*	19.6
Total	3,625.4	366.5	73.2	35.2	4,100.3	2,257.3	250.1	39.8	19.1	2,566.3
DID NOT HAVE A JOB AT FEBRUARY 1985										
15-19	49.0	9.3	*	*	62.2	54.0	9.8	*	*	67.7
20-24	49.9	7.7	*	*	62.0	36.6	7.5	*	*	66.9
25-34	52.0	8.6	*	*	66.1	102.2	8.8	*	*	114.5
35-44	27.0	*	*	*	30.8	61.2	5.4	*	*	68.2
45-54	24.5	*	*	*	27.3	39.8	*	*	*	42.5
55-59	16.6	*	*	*	17.5	14.9	*	*	*	15.5
60-64	25.3	*	*	*	25.7	9.9	*	*	*	10.2
65 and over	18.6	*	*	*	18.9	*	*	*	*	*
Total	262.9	31.2	8.9	7.5	310.5	341.9	34.2	6.8	5.8	388.7
TOTAL										
15-19	310.1	59.7	12.2	5.6	387.5	297.0	56.0	9.7	5.4	368.0
20-24	466.7	84.9	22.5	12.6	586.6	402.0	80.0	15.4	5.6	502.9
25-34	1,005.1	133.3	27.3	14.2	1,179.8	694.5	80.5	14.4	8.5	797.8
35-44	928.9	75.2	12.8	6.1	1,022.9	624.2	45.7	5.8	*	679.5
45-54	656.9	32.8	5.7	*	698.0	390.0	18.4	*	*	410.9
55-59	280.1	8.8	*	*	290.6	115.8	*	*	*	119.3
60-64	164.7	*	*	*	167.8	53.1	*	*	*	53.7
65 and over	75.8	*	*	*	77.4	22.6	*	*	*	22.9
Total	3,888.3	397.7	82.1	42.8	4,410.8	2,599.2	284.2	46.6	24.9	2,955.0

TABLE 7. PERSONS WHO WORKED AT SOME TIME DURING THE YEAR ENDING FEBRUARY 1985: NUMBER OF EMPLOYERS OR BUSINESSES, CURRENT LABOUR FORCE STATUS, INDUSTRY AND OCCUPATION ('000)

	Number of employers or businesses									
	Males					Females				
	1	2	3	4 and over	Total	1	2	3	4 and over	Total
Total	3,888.3	397.7	82.1	42.8	4,410.8	2,599.2	284.2	46.6	24.9	2,955.0
<i>Labour force status at February 1985—</i>										
Out of the labour force	141.9	8.1	*	*	153.0	279.9	20.8	7.7		308.5
Looking for work	121.1	23.1	6.7	6.7	157.6	62.0	13.3	4.9		80.2
Working	3,625.4	366.5	73.2	35.2	4,100.3	2,257.3	250.1	39.8	19.1	2,566.3
<i>Industry of current job—</i>										
Agriculture, forestry, fishing and hunting	280.1	17.9	4.9	5.0	308.0	107.4	*	*	*	114.4
Mining	81.2	7.5	*	*	90.6	7.2	*	*	*	8.8
Manufacturing	775.3	68.4	12.0	6.4	862.1	278.4	29.3	4.7		312.4
Electricity, gas and water	117.5	4.8	*	*	123.2	12.2	*	*	*	12.5
Construction	346.4	48.5	11.2	6.8	412.8	59.1	*	*	*	63.5
Wholesale and retail trade	622.1	85.7	17.2	6.4	731.4	493.4	59.8	10.1	*	566.8
Transport and storage	281.7	23.3	*	*	311.3	49.3	6.2	*	*	57.0
Communication	93.9	5.6	*	*	100.3	34.1	*	*	*	39.2
Finance, property and business services	304.1	33.6	7.5	*	347.2	257.9	30.9	6.3	*	297.6
Public administration and defence	187.4	16.0	*	*	206.6	100.6	12.2	*	*	115.0
Community services	383.8	26.9	4.7	*	417.3	654.2	64.4	9.2	5.5	733.3
Recreation, personal and other services	152.0	28.3	5.5	*	189.7	203.4	34.1	*	4.6	246.0
<i>Occupation of current job—</i>										
Professional, technical, etc.	509.8	45.5	7.1	*	565.8	427.7	43.8	5.9	4.8	482.2
Administrative, executive and managerial	349.9	30.3	*	*	384.6	63.0	6.6	*	*	71.2
Clerical	300.4	23.6	*	*	328.4	764.5	91.8	17.3	8.8	882.5
Sales	233.5	32.1	8.7	*	276.3	275.6	33.8	6.2	*	317.3
Farmers, fisherpersons and timber-getters, etc.	321.1	23.1	5.3	5.5	355.1	103.5	*	*	*	109.4
Miners and quarry workers	30.6	*	*	*	34.1	*	*	*	*	*
Transport and communication	262.0	26.8	5.2	*	295.5	36.7	5.2	*	*	42.4
Trades and production-process workers and labourers, n.e.c.	1,416.4	159.2	35.1	17.9	1,628.6	213.7	18.3	*	*	234.0
Service, sport and recreation	201.5	23.2	*	*	231.9	372.6	46.5	5.9	*	427.4

TABLE 8. PERSONS WHO WORKED AT SOME TIME DURING THE YEAR ENDING FEBRUARY 1985 : LABOUR MOBILITY AND INDUSTRY DIVISIONS
(* 000)

	Industry(a)										Total
	Agriculture, forestry, fishing and hunting	Manufacturing	Construction	Wholesale and retail trade	Transport and storage	Finance, property and business services	Public administration and defence	Community services	Recreation, personal and other services	Other(b)	
MALES											
Working at time of survey—											
For one year or more	265.2	708.4	307.6	534.0	257.7	266.4	169.4	342.0	132.1	267.3	3,250.1
Less than one year—											
No previous job during the year	11.8	52.3	22.2	60.9	10.7	15.2	11.0	15.4	15.1	6.0	220.5
Had a previous job	31.0	101.4	83.1	136.5	42.8	65.6	26.2	59.8	42.5	40.7	629.7
Same industry division	17.9	55.7	52.4	85.7	21.2	40.2	11.8	43.2	22.9	20.8	371.7
Changed industry division—											
Industry of current job	13.2	45.7	30.6	50.8	21.6	25.3	14.4	16.7	19.6	20.0	257.9
Industry of previous job	22.2	51.6	31.8	51.9	16.1	23.2	14.2	18.0	18.0	10.8	257.9
Not working at time of survey(c)	24.4	61.1	40.5	68.2	18.9	16.0	16.0	24.8	25.3	15.4	310.5
Began last job more than a year ago(c)	9.4	36.6	20.9	40.2	12.5	9.7	8.3	15.7	14.1	12.7	180.1
Currently looking for work(c)	4.7	19.5	12.1	18.4	6.5	*	*	*	7.6	*	84.8
Out of the labour force(c)	4.8	17.1	8.8	21.7	5.9	6.1	*	11.6	6.5	9.0	95.3
Began and left a job during the year(c)	14.9	24.5	19.6	28.1	6.4	6.3	7.7	9.1	11.2	*	130.5
Currently looking for work(c)	8.2	15.3	12.4	15.5	*	*	4.6	*	5.4	*	72.8
Out of the labour force(c)	6.7	9.2	7.2	12.6	*	*	*	4.8	5.9	*	57.7
FEMALES											
Working at time of survey—											
For one year or more	100.1	228.8	54.0	391.3	42.3	211.6	86.1	572.2	158.6	45.4	1,890.5
Less than one year—											
No previous job during the year	6.0	44.5	*	87.4	5.4	30.2	10.0	58.2	40.1	*	289.4
Had a previous job	8.3	39.0	5.9	88.1	9.3	55.8	18.9	102.9	47.3	11.1	386.4
Same industry division	*	19.7	*	53.4	*	32.1	8.6	72.5	25.0	*	223.5
Changed industry division—											
Industry of current job	4.7	19.3	*	34.7	6.8	23.6	10.3	30.4	22.3	6.9	162.9
Industry of previous job	*	20.5	5.2	41.8	*	21.5	8.8	23.4	31.0	*	162.9
Not working at time of survey(c)	18.0	56.7	5.6	101.7	6.7	35.4	19.9	87.4	52.6	4.7	388.7
Began last job more than a year ago(c)	8.6	38.1	*	53.9	*	19.8	8.7	53.1	23.7	*	217.0
Currently looking for work(c)	*	6.5	*	10.2	*	*	*	8.6	4.6	*	37.7
Out of the labour force(c)	7.2	31.7	*	43.7	*	17.1	7.1	44.5	19.1	*	179.3
Began and left a job during the year(c)	9.4	18.6	*	47.8	*	15.6	11.2	34.3	28.9	*	171.7
Currently looking for work(c)	*	*	*	15.2	*	*	*	7.6	5.7	*	42.5
Out of the labour force(c)	6.6	14.2	*	32.6	*	12.3	8.7	26.6	23.2	*	129.2
PERSONS											
Working at time of survey—											
For one year or more	365.3	937.2	361.6	925.3	300.0	477.9	255.5	914.2	290.8	312.7	5,140.6
Less than one year—											
No previous job during the year	17.8	96.9	25.7	148.3	16.1	45.4	21.0	73.6	55.1	10.0	509.9
Had a previous job	39.3	140.4	88.9	224.6	52.1	121.4	45.0	162.7	89.8	51.8	1,016.1
Same industry division	21.4	75.4	54.4	139.1	23.6	72.4	20.3	115.6	47.9	25.0	595.2
Changed industry division—											
Industry of current job	17.9	65.0	34.6	85.5	28.5	49.0	24.7	47.1	41.8	26.8	420.9
Industry of previous job	25.6	72.1	36.9	93.7	20.4	44.7	23.0	41.5	49.0	13.8	420.9
Not working at time of survey(c)	42.4	117.8	46.1	169.9	25.6	51.4	35.9	112.2	77.9	20.0	699.2
Began last job more than a year ago(c)	18.0	74.7	25.0	94.1	16.1	29.5	17.1	68.8	37.8	16.0	397.1
Currently looking for work(c)	6.1	26.0	13.2	28.6	6.8	6.3	6.1	12.8	12.2	4.5	122.5
Out of the labour force(c)	11.9	48.8	11.8	65.5	9.3	23.2	11.0	56.0	25.6	11.6	274.6
Began and left a job during the year(c)	24.4	43.1	21.1	75.8	9.5	21.9	18.9	43.4	40.2	*	302.1
Currently looking for work(c)	11.0	19.6	12.4	30.7	*	5.7	7.1	12.0	11.1	*	115.3
Out of the labour force(c)	13.3	23.5	8.6	45.1	5.7	16.2	11.7	31.4	29.1	*	186.8

(a) Industry of current job unless otherwise indicated. (b) Includes mining; electricity, gas and water; and communication. (c) Industry of previous job.

TABLE 9. PERSONS WHO WORKED AT SOME TIME DURING THE YEAR ENDING FEBRUARY 1985 :
LABOUR MOBILITY AND MAJOR OCCUPATION GROUPS
(' 000)

	Occupation(a)								Total
	Pro- fessional, technical, etc.	Adminis- trative, executive, and managerial	Clerical	Sales	Farmers, fisher- persons, timber- getters, etc.	Transport and com- munication	Trades- persons, etc.(b)	Service, sport and recreation	
MALES									
Working at time of survey—									
For one year or more	463.0	321.2	262.4	194.0	301.5	241.6	1,294.3	172.0	3,250.1
Less than one year—									
No previous job during the year	16.2	5.9	16.6	28.5	15.2	11.0	107.3	19.8	220.5
Had a previous job	86.6	57.4	49.4	53.7	38.4	43.0	261.1	40.1	629.7
Same major occupation group	69.6	36.9	32.1	29.2	21.5	23.5	198.5	22.8	434.1
Changed major occupation group—									
Occupation of current job	16.9	20.5	17.3	24.6	16.9	19.5	62.6	17.3	195.6
Occupation of previous job	13.3	17.2	18.2	28.9	24.5	18.7	53.1	21.6	195.6
Not working at time of survey(c)	19.6	18.9	19.3	27.4	33.0	19.0	144.9	28.5	310.5
Began last job more than a year ago(c)	13.3	17.8	11.4	16.0	14.6	12.9	78.2	15.9	180.1
Currently looking for work(c)	*	6.1	*	8.0	6.8	7.0	42.2	8.1	84.8
Out of the labour force(c)	11.2	11.7	7.0	8.0	7.8	5.9	36.0	7.8	95.3
Began and left a job during the year(c)	6.3	*	7.9	11.4	18.3	6.2	66.7	12.6	130.5
Currently looking for work(c)	*	*	*	5.7	10.4	*	44.1	5.2	72.8
Out of the labour force(c)	4.7	*	6.2	5.7	7.9	*	22.7	7.4	57.7
FEMALES									
Working at time of survey—									
For one year or more	370.9	57.1	648.8	214.6	94.9	32.1	171.6	300.4	1,890.5
Less than one year—									
No previous job during the year	34.1	*	83.8	53.6	7.2	*	38.0	65.3	289.4
Had a previous job	77.1	10.3	149.8	49.0	7.3	6.8	24.4	61.6	386.4
Same major occupation group	63.7	*	117.6	25.3	*	*	15.9	39.0	269.5
Changed major occupation group—									
Occupation of current job	13.4	6.8	32.2	23.7	*	5.6	8.6	22.5	116.9
Occupation of previous job	11.6	*	27.3	27.3	*	*	11.7	30.7	116.9
Not working at time of survey(c)	46.3	5.5	118.8	63.1	17.4	6.6	44.7	86.3	388.7
Began last job more than a year ago(c)	30.5	*	66.5	32.1	8.5	*	27.6	43.7	217.0
Currently looking for work(c)	*	*	9.7	6.8	*	*	7.3	6.8	37.7
Out of the labour force(c)	26.2	*	56.8	25.3	6.6	*	20.3	36.9	179.3
Began and left a job during the year(c)	15.8	*	52.3	30.9	8.9	*	17.1	42.6	171.7
Currently looking for work(c)	*	*	11.9	9.0	*	*	5.8	9.7	42.5
Out of the labour force(c)	13.6	*	40.3	21.9	6.2	*	11.3	33.0	129.2
PERSONS									
Working at time of survey—									
For one year or more	833.9	378.3	911.2	408.7	396.5	273.6	1,465.9	472.4	5,140.6
Less than one year—									
No previous job during the year	50.3	9.7	100.5	82.2	22.3	14.5	145.3	85.1	509.9
Had a previous job	163.7	67.7	199.2	102.7	45.7	49.8	285.6	101.7	1,016.1
Same major occupation group	133.4	40.4	149.7	54.5	24.6	24.8	214.3	61.9	703.6
Changed major occupation group—									
Occupation of current job	30.3	27.3	49.5	48.2	21.1	25.0	71.2	39.8	312.5
Occupation of previous job	24.9	21.0	45.5	56.2	26.6	21.1	64.8	52.3	312.5
Not working at time of survey(c)	65.9	24.5	138.1	90.4	50.3	25.6	189.6	114.8	699.2
Began last job more than a year ago(c)	43.8	21.8	77.9	48.1	23.1	17.0	105.8	59.6	397.1
Currently looking for work(c)	6.4	6.5	14.1	14.8	8.7	7.5	49.5	14.9	122.5
Out of the labour force(c)	37.4	15.3	63.8	33.3	14.4	9.5	56.3	44.7	274.6
Began and left a job during the year(c)	22.2	*	60.2	42.3	27.2	8.6	83.8	55.2	302.1
Currently looking for work(c)	*	*	13.6	14.7	13.1	*	49.9	14.9	115.3
Out of the labour force(c)	18.3	*	46.5	27.6	14.1	5.1	33.9	40.3	186.8

(a) Occupation of current job unless otherwise indicated. (b) Includes miners and quarry workers, trades and production-process workers and labourers, n.e.c.
(c) Occupation of previous job in period.

**TABLE 10. PERSONS WHO LEFT A JOB DURING THE YEAR ENDING FEBRUARY 1985:
REASON FOR LEAVING AND INDUSTRY OF JOB LEFT**
(' 000)

Reason for leaving job	Industry of job left										Total
	Agriculture, forestry, fishing and hunting	Manufacturing	Construction	Wholesale and retail trade	Transport and storage	Finance, property and business services	Public administration and defence	Community services	Recreation, personal and other services	Other(a)	
Business changed location(b)	*	13.2	13.7	17.5	*	9.9	*	*	5.1	*	73.9
Better business or job(c)	14.7	46.4	21.5	88.3	13.3	34.6	11.5	42.7	35.0	5.4	313.4
Promotion or transfer(d)	*	6.4	*	25.5	9.6	27.2	10.5	42.0	*	18.6	147.7
Business closed	*	14.0	12.2	27.7	*	4.6	*	*	5.9	*	74.7
Laid off: no work	12.7	38.7	30.3	35.7	5.0	12.4	5.3	13.7	17.9	*	174.8
Laid off: other reasons	*	22.1	5.1	34.2	5.0	4.9	*	7.7	11.5	*	98.2
Fixed term job(e)	6.5	13.8	15.6	13.6	*	16.6	21.7	42.8	16.3	*	153.5
Holiday or seasonal work	23.8	11.8	*	15.3	*	*	*	4.7	8.8	*	75.6
Unsatisfactory conditions(f)	*	27.2	6.4	34.7	4.6	11.4	*	15.6	20.0	*	130.9
Wanted a change	*	4.7	*	17.8	*	7.0	*	11.1	10.4	*	66.4
Study	*	*	*	16.1	*	*	*	7.2	5.5	*	44.8
Own health or medical reasons	*	21.7	5.4	15.8	4.7	5.5	*	15.2	6.9	*	87.7
Retired	*	10.1	*	9.6	*	4.9	*	10.9	*	5.7	57.8
Personal or family reasons	*	24.1	6.1	39.0	6.2	18.6	6.9	39.5	18.8	*	166.2
Other reasons	*	6.6	*	12.0	*	*	*	9.7	6.2	*	49.6
Total	89.4	265.3	137.3	402.7	69.7	168.5	79.3	269.3	174.9	58.9	1,715.3
Males	64.5	168.5	124.7	205.8	56.1	79.4	42.0	86.0	66.2	47.0	940.2
Females	24.9	96.9	12.7	196.8	13.6	89.1	37.3	183.3	108.7	11.9	775.1

(a) Includes mining; electricity, gas and water; and communication. (b) Includes home operators who changed residence. (c) Includes starting own business. (d) Includes secondment or transfer as a relief worker. (e) Duration of employment was fixed on hiring and has expired. (f) Includes work conditions, transport difficulties, unsuitable hours, etc.

**TABLE 11. PERSONS WHO LEFT A JOB DURING THE YEAR ENDED FEBRUARY 1985:
REASON FOR LEAVING AND OCCUPATION OF JOB LEFT**
(' 000)

Reason for leaving job	Occupation of job left								Total
	Professional, technical etc.	Administrative, executive and managerial	Clerical	Sales	Farmers, fishers, timber-getters etc.	Transport and communication	Tradespersons, etc.(a)	Service, sport and recreation	
Business changed location(b)	10.3	9.8	12.4	6.8	*	*	24.7	*	73.9
Better business or job (c)	47.0	15.7	56.3	44.6	14.0	15.9	82.0	37.9	313.4
Promotion or transfer(d)	40.4	14.4	37.7	12.0	*	7.5	23.4	11.0	147.7
Business closed	*	9.6	7.3	13.5	4.9	*	25.9	6.8	74.7
Laid off: no work	9.1	*	18.5	16.9	13.7	5.6	84.3	23.6	174.8
Laid off: other reasons	*	*	15.9	15.9	5.7	4.8	36.6	14.5	98.2
Fixed term job(e)	30.3	*	46.7	6.6	10.0	4.7	35.5	19.0	153.5
Holiday or seasonal work	*	*	9.9	9.7	25.0	*	15.5	8.9	75.6
Unsatisfactory conditions(f)	13.0	5.1	25.8	17.7	5.3	4.9	35.8	23.3	130.9
Wanted a change	8.4	4.3	11.1	9.4	*	*	16.4	12.6	66.4
Study	7.2	*	7.6	10.1	*	*	9.1	7.0	44.8
Own health or medical reasons	7.6	*	15.7	5.6	4.7	*	31.6	16.2	87.7
Retired	7.5	7.0	11.5	5.4	*	*	12.7	7.3	57.8
Personal or family reasons	27.4	6.5	45.6	21.0	5.0	5.7	25.6	29.4	166.2
Other reasons	7.6	4.6	11.3	5.8	*	*	9.6	8.1	49.6
Total	224.2	85.9	333.3	201.1	101.6	71.5	468.7	229.0	1,715.3
Males	102.5	73.0	69.6	85.4	79.0	61.2	396.5	72.9	940.2
Females	121.7	12.9	263.7	115.7	22.6	10.3	72.2	156.0	775.1

(a) Includes miners and quarry workers, trades and production-process workers and labourers, n.e.c. For footnotes (b) to (f) see previous table.

TABLE 12. PERSONS WHO LEFT A JOB DURING THE YEAR ENDING FEBRUARY 1985:
REASON FOR LEAVING AND FAMILY STATUS
(' 000)

Reason for leaving job	Family status									Total
	Member of a family									
	Husband or wife			Not married family head	Child of family head	Total (incl. other relatives)	Not a member of a family			
	With children aged 0-14 present	Without children aged 0-14 present	Total				Not living alone	Living alone	Not family coded	
MALES										
Business changed location(a)	20.6	16.4	37.0	*	*	42.2	*	*	*	50.7
Better business or job(b)	72.8	36.5	109.3	*	39.9	153.8	22.5	8.6	12.0	196.8
Promotion or transfer(c)	45.9	17.7	63.6	*	14.4	80.8	7.7	7.4	4.6	100.5
Business closed	16.7	11.9	28.7	*	7.5	37.9	*	*	*	46.7
Laid off: no work	28.1	20.1	48.2	*	34.3	86.1	14.0	7.1	5.5	112.7
Laid off: other reasons	12.5	9.1	21.6	*	23.1	47.4	*	*	*	58.9
Fixed term job(d)	17.0	7.6	24.6	*	22.5	50.6	7.3	5.5	*	67.8
Holiday or seasonal work	4.9	4.7	9.6	*	17.2	29.0	*	*	*	37.1
Unsatisfactory conditions(e)	23.0	8.8	31.8	*	16.4	51.9	6.3	4.7	*	65.4
Wanted a change	10.7	6.1	16.8	*	6.7	24.5	4.8	*	*	36.3
Study	*	*	*	*	15.4	19.9	*	*	*	23.7
Own health or medical reasons	11.3	15.5	26.8	*	4.3	32.5	*	*	*	40.0
Retired	*	28.8	31.0	*	*	32.7	*	*	*	36.5
Personal or family reasons	14.8	7.5	22.4	*	9.5	33.6	5.2	*	*	42.0
Other reasons	8.6	6.0	14.6	*	*	18.4	*	*	*	25.0
Total	290.7	198.1	488.8	14.0	218.8	741.3	90.6	58.2	50.2	940.2
FEMALES										
Business changed location(a)	6.3	8.7	15.0	*	*	19.2	*	*	*	23.2
Better business or job(b)	25.3	19.4	44.7	5.2	33.6	84.8	17.1	6.8	7.9	116.6
Promotion or transfer(c)	8.3	10.1	18.3	*	11.0	32.2	8.4	4.6	*	47.1
Business closed	7.5	8.3	15.8	*	*	22.9	*	*	*	28.0
Laid off: no work	17.7	11.5	29.2	*	16.0	48.9	6.6	*	*	62.0
Laid off: other reasons	5.3	5.9	11.2	*	15.5	29.9	6.2	*	*	39.3
Fixed term job(d)	34.5	13.8	48.3	5.7	18.9	73.7	6.5	*	*	85.7
Holiday or seasonal work	10.9	7.4	18.3	*	11.2	32.3	*	*	*	38.5
Unsatisfactory conditions(e)	17.9	13.2	31.0	5.4	14.5	52.1	6.9	4.8	*	65.5
Wanted a change	5.8	4.8	10.6	*	5.7	19.6	5.2	*	*	30.1
Study	*	*	*	*	12.8	16.4	*	*	*	21.1
Own health or medical reasons	17.8	13.7	31.5	*	*	41.0	*	*	*	47.7
Retired	*	13.0	15.7	*	*	18.1	*	*	*	21.3
Personal or family reasons	60.9	28.8	89.6	7.6	6.1	105.3	8.0	*	9.1	124.3
Other reasons	7.1	6.3	13.4	*	*	18.6	*	*	*	24.6
Total	229.2	166.5	395.6	46.2	159.3	615.0	80.2	39.4	40.5	775.1
PERSONS										
Business changed location(a)	26.9	25.1	51.9	*	6.0	61.4	*	4.9	*	73.9
Better business or job(b)	98.1	55.9	154.1	7.8	73.5	238.6	39.6	15.4	19.8	313.4
Promotion or transfer(c)	54.1	27.8	81.9	*	25.4	113.0	16.2	12.0	6.5	147.7
Business closed	24.3	20.2	44.5	*	11.5	60.9	4.8	5.6	*	74.7
Laid off: no work	45.9	31.5	77.4	*	50.3	134.9	20.7	9.9	9.3	174.8
Laid off: other reasons	17.8	15.0	32.8	*	38.5	77.3	10.5	4.9	5.6	98.2
Fixed term job(d)	51.5	21.4	72.9	6.8	41.4	124.3	13.8	8.1	7.4	153.5
Holiday or seasonal work	15.8	12.0	27.8	*	28.4	61.3	6.6	*	4.7	75.6
Unsatisfactory conditions(e)	40.8	22.0	62.8	6.9	30.8	104.0	13.2	9.5	*	130.9
Wanted a change	16.5	11.0	27.4	*	12.4	44.1	10.1	6.3	5.9	66.4
Study	*	*	5.9	*	28.2	36.3	4.7	*	*	44.8
Own health or medical reasons	29.1	29.2	58.3	5.3	8.3	73.5	*	7.0	*	87.7
Retired	4.9	41.7	46.7	*	*	50.8	*	*	*	57.8
Personal or family reasons	75.7	36.3	112.0	7.8	15.5	138.9	13.2	*	10.2	166.2
Other reasons	15.6	12.3	27.9	*	7.0	37.0	6.9	*	*	49.6
Total	519.9	364.6	884.5	60.2	378.1	1,356.2	170.8	97.6	90.7	1,715.3

(a) Includes home operators who changed residence. (b) Includes starting own business. (c) Includes secondment or transfer as a relief worker. (d) Duration of employment was fixed on hiring and has expired. (e) Includes work conditions, transport difficulties, unsuitable hours, etc.

**TABLE 13. PERSONS WHO LEFT A JOB DURING THE YEAR ENDING FEBRUARY 1985:
REASON FOR LEAVING AND DURATION OF JOB LEFT
(' 000)**

Reason for leaving job	Duration of job left									Total
	Under 3 months	3 and under 6 months	6 and under 12 months	Total under 1 year	1 and under 2 years	2 and under 3 years	3 and under 5 years	5 and under 10 years	10 years and over	
MALES										
Business changed location(a)	*	*	5.9	13.3	8.3	7.0	9.2	6.5	6.3	50.7
Better business or job(b)	25.8	19.8	31.7	77.2	30.6	25.6	29.2	23.5	10.8	196.8
Promotion or transfer(c)	15.0	8.1	13.9	37.0	15.5	14.8	15.6	12.2	5.5	100.5
Business closed	*	*	7.3	13.7	7.2	8.5	6.3	4.7	6.2	46.7
Laid off: no work	36.0	18.7	22.0	76.7	15.1	4.9	7.9	*	*	112.7
Laid off: other reasons	15.6	9.3	8.1	32.9	7.3	4.6	5.1	5.3	*	58.9
Fixed term job(d)	35.4	13.9	10.1	59.5	*	*	*	*	*	67.8
Holiday or seasonal work	24.9	5.5	*	32.6	*	*	*	*	*	37.1
Unsatisfactory conditions(e)	17.5	7.9	12.9	38.3	5.7	6.7	6.2	5.5	*	65.4
Wanted a change	*	*	5.4	10.4	*	*	5.1	6.8	5.4	36.3
Study	11.7	*	*	18.3	*	*	*	*	*	23.7
Own health or medical reasons	6.9	*	*	12.5	*	*	*	7.3	11.6	40.0
Retired	*	*	*	*	*	*	*	6.1	24.1	36.5
Personal or family reasons	5.4	*	5.6	14.0	7.4	*	5.2	5.7	5.3	42.0
Other reasons	*	*	*	9.3	*	*	*	*	*	25.0
Total	207.8	103.4	135.8	447.1	114.8	89.8	104.6	93.4	90.5	940.2
FEMALES										
Business changed location(a)	*	*	*	6.6	*	*	5.7	*	*	23.2
Better business or job(b)	20.9	15.8	17.7	54.3	20.7	16.1	14.0	10.3	*	116.6
Promotion or transfer(c)	8.3	5.5	6.0	19.7	7.4	6.2	8.3	*	*	47.1
Business closed	*	4.5	*	12.7	*	*	*	*	*	28.0
Laid off: no work	22.1	11.1	8.9	42.1	5.4	*	5.5	*	*	62.0
Laid off: other reasons	12.2	8.3	7.6	28.1	*	*	*	*	*	39.3
Fixed term job(d)	58.2	11.9	8.1	78.2	*	*	*	*	*	85.7
Holiday or seasonal work	19.9	6.5	*	30.2	*	*	*	*	*	38.5
Unsatisfactory conditions(e)	16.7	9.2	13.2	39.1	9.4	4.7	7.0	*	*	65.5
Wanted a change	*	*	*	8.6	5.1	*	5.9	5.8	*	30.1
Study	9.0	*	*	15.2	*	*	*	*	*	21.1
Own health or medical reasons	8.6	*	7.3	18.9	7.3	4.5	7.0	5.4	4.6	47.7
Retired	*	*	*	*	*	*	*	5.2	10.0	21.3
Personal or family reasons	16.6	16.0	14.7	47.3	22.1	15.6	19.7	13.3	6.3	124.3
Other reasons	*	*	*	8.0	4.8	*	*	*	*	24.6
Total	204.2	100.8	106.1	411.1	98.3	73.0	88.0	67.5	37.3	775.1
PERSONS										
Business changed location(a)	6.1	5.2	8.7	19.9	12.4	9.4	14.8	9.4	7.9	73.9
Better business or job(b)	46.6	35.5	49.3	131.5	51.3	41.7	43.2	33.8	12.0	313.4
Promotion or transfer(c)	23.3	13.6	19.8	56.8	22.9	21.4	23.9	16.0	6.8	147.7
Business closed	7.4	7.9	11.1	26.5	9.6	11.7	10.2	7.7	8.9	74.7
Laid off: no work	58.1	29.8	30.9	118.8	20.5	8.3	13.4	7.6	6.1	174.8
Laid off: other reasons	27.8	17.6	15.6	61.0	10.9	7.5	6.3	8.2	*	98.2
Fixed term job(d)	93.7	25.8	18.2	137.7	7.1	*	*	*	*	153.5
Holiday or seasonal work	44.7	12.0	6.1	62.8	*	*	*	*	*	75.6
Unsatisfactory conditions(e)	34.2	17.1	26.1	77.4	15.1	11.4	13.2	8.9	4.9	130.9
Wanted a change	4.5	5.0	9.5	19.0	9.6	8.1	11.0	12.6	6.2	66.4
Study	20.8	4.6	8.1	33.5	*	*	*	*	*	44.8
Own health or medical reasons	15.5	5.3	10.5	31.4	10.2	7.1	10.1	12.7	16.2	87.7
Retired	*	*	*	*	*	*	5.1	11.3	34.1	57.8
Personal or family reasons	22.0	19.0	30.3	61.4	29.5	19.9	24.9	19.1	11.6	166.2
Other reasons	6.1	4.9	6.3	17.3	7.8	5.7	7.8	6.6	4.6	49.6
Total	412.1	204.2	241.9	858.1	213.1	162.7	192.6	160.9	127.8	1,715.3

For footnotes(a) to(e) see Table 12.

**TABLE 14. PERSONS WHO LEFT A JOB DURING THE YEAR ENDING FEBRUARY 1985:
REASON FOR LEAVING, STATUS OF WORKER IN JOB LEFT AND LABOUR FORCE STATUS AT FEBRUARY 1985**

Reason for leaving job	Status of worker in job left		Labour force status at February 1985				Total	Pro- portion of total (per cent)
	Wage or salary earner	Other	Working	Looking for work	Total in the labour force	Out of the labour force		
—000—								
MALES								
Business changed location(a)	34.9	15.8	50.7	*	50.7	*	50.7	5.4
Better business or job(b)	180.6	16.2	189.9	*	192.8	*	196.8	20.9
Promotion or transfer(c)	100.0	*	100.5	*	100.5	*	100.5	10.7
Business closed	30.4	16.3	31.1	10.8	41.9	4.8	46.7	5.0
Laid off: no work	107.0	5.7	50.4	45.1	95.4	17.3	112.7	12.0
Laid off: other reasons	58.3	*	22.1	30.0	52.1	6.7	58.9	6.3
Fixed term job(d)	64.0	*	34.0	18.9	52.9	14.9	67.8	7.2
Holiday or seasonal work	33.1	*	13.6	7.1	20.7	16.4	37.1	3.9
Unsatisfactory conditions(e)	61.9	*	47.3	13.0	60.4	5.0	65.4	7.0
Wanted a change	30.2	6.2	27.8	5.3	33.1	*	36.3	3.9
Study	23.2	*	6.0	*	7.4	16.3	23.7	2.5
Own health or medical reasons	34.0	5.9	10.8	7.0	17.8	22.2	40.0	4.3
Retired	31.1	5.4	*	*	*	33.3	36.5	3.9
Personal or family reasons	36.0	6.0	24.2	10.7	34.9	7.0	42.0	4.5
Other reasons	19.5	5.7	18.8	4.6	23.4	*	25.0	2.7
Total	844.3	95.9	629.7	157.6	787.2	153.0	940.2	100.0
FEMALES								
Business changed location(a)	17.7	5.5	23.2	*	23.2	*	23.2	3.0
Better business or job(b)	110.9	5.7	111.9	*	113.0	*	116.6	15.0
Promotion or transfer(c)	46.7	*	47.1	*	47.1	*	47.1	6.1
Business closed	19.0	9.0	13.1	*	16.5	11.5	28.0	3.6
Laid off: no work	58.9	*	19.8	15.2	34.9	27.1	62.0	8.0
Laid off: other reasons	39.0	*	16.5	10.0	26.6	12.7	39.3	5.1
Fixed term job(d)	83.6	*	22.7	15.0	37.7	48.0	85.7	11.1
Holiday or seasonal work	35.8	*	7.6	*	11.9	26.6	38.5	5.0
Unsatisfactory conditions(e)	63.4	*	41.0	8.0	49.0	16.6	65.5	8.5
Wanted a change	26.8	*	19.0	4.6	23.6	6.5	30.1	3.9
Study	20.5	*	*	*	5.2	16.0	21.1	2.7
Own health or medical reasons	44.8	*	6.4	*	10.6	37.1	47.7	6.2
Retired	19.0	*	*	*	*	20.4	21.3	2.8
Personal or family reasons	115.8	8.5	38.9	11.7	50.5	73.7	124.3	16.0
Other reasons	21.2	*	13.8	*	15.9	8.7	24.6	3.2
Total	723.0	52.1	386.4	80.2	466.6	308.5	775.1	100.0
PERSONS								
Business changed location(a)	52.6	21.3	73.9	*	73.9	*	73.9	4.3
Better business or job(b)	291.5	21.9	301.8	*	305.8	7.7	313.4	18.3
Promotion or transfer(c)	146.6	*	147.7	*	147.7	*	147.7	8.6
Business closed	49.4	25.3	44.3	14.2	58.5	16.2	74.7	4.4
Laid off: no work	166.0	8.8	70.1	60.2	130.4	44.4	174.8	10.2
Laid off: other reasons	97.3	*	38.6	40.1	78.7	19.5	98.2	5.7
Fixed term job(d)	147.6	5.9	56.7	33.8	90.5	63.0	153.5	8.9
Holiday or seasonal work	68.9	6.8	21.2	11.4	32.6	43.0	75.6	4.4
Unsatisfactory conditions(e)	125.3	5.6	88.4	21.0	109.4	21.5	130.9	7.6
Wanted a change	56.9	9.5	46.8	9.9	56.7	9.7	66.4	3.9
Study	43.8	*	10.3	*	12.5	32.3	44.8	2.6
Own health or medical reasons	78.8	8.9	17.3	11.1	28.4	59.3	87.7	5.1
Retired	50.1	7.7	*	*	*	53.7	57.8	3.4
Personal or family reasons	151.8	14.4	63.1	22.4	85.5	80.8	166.2	9.7
Other reasons	40.7	9.0	32.6	6.7	39.2	10.4	49.6	2.9
Total	1,567.3	148.0	1,016.1	237.8	1,253.9	461.4	1,715.3	100.0

For footnotes (a) to (e) see Table 12.

**TABLE 15. PERSONS WHO LEFT A JOB DURING THE YEAR ENDING FEBRUARY 1985:
REASON FOR LEAVING, MARITAL STATUS AND AGE
(' 000)**

Reason for leaving job	Age group (years)							Total
	Married	Not married	15-24	25-34	35-44	45-54	55 and over	
MALES								
Business changed location(a)	37.8	12.9	6.6	15.6	16.4	7.9	*	50.7
Better business or job(b)	113.4	83.4	67.2	74.1	40.3	12.4	*	196.8
Promotion or transfer(c)	65.2	35.3	23.6	39.5	27.6	7.9	*	100.5
Business closed	29.3	17.5	9.2	13.8	10.4	9.2	*	46.7
Laid off: no work	49.7	63.1	51.5	30.6	15.0	10.1	5.6	112.7
Laid off: other reasons	23.5	35.3	31.9	13.8	5.5	4.8	*	58.9
Fixed term job(d)	26.7	41.2	29.9	19.4	8.5	5.7	*	67.8
Holiday or seasonal work	10.4	26.7	22.0	8.4	*	*	*	37.1
Unsatisfactory conditions(e)	32.9	32.4	26.0	22.0	11.9	*	*	65.4
Wanted a change	17.8	18.6	11.8	12.3	7.9	*	*	36.3
Study	*	20.7	18.4	4.7	*	*	*	23.7
Own health or medical reasons	27.9	12.1	6.2	7.2	5.8	6.7	14.2	40.0
Retired	31.7	4.8	*	*	*	*	33.2	36.5
Personal or family reasons	22.7	19.2	14.6	13.9	7.8	*	*	42.0
Other reasons	14.7	10.3	6.7	7.5	5.9	*	*	25.0
Total	506.6	433.6	326.2	282.7	166.5	82.3	82.4	940.2
FEMALES								
Business changed location(a)	15.5	7.6	4.8	7.6	6.3	*	*	23.2
Better business or job(b)	48.5	68.1	57.4	32.7	20.0	5.7	*	116.6
Promotion or transfer(c)	19.0	28.1	20.1	15.9	6.3	*	*	47.1
Business closed	16.8	11.2	7.7	7.0	5.7	5.0	*	28.0
Laid off: no work	31.3	30.7	28.2	13.0	11.4	7.2	*	62.0
Laid off: other reasons	11.7	27.5	25.0	8.1	*	*	*	39.3
Fixed term job(d)	49.8	35.9	30.3	28.0	16.9	7.1	*	85.7
Holiday or seasonal work	19.0	19.5	17.9	9.2	4.9	5.5	*	38.5
Unsatisfactory conditions(e)	32.8	32.8	25.8	19.9	14.1	4.9	*	65.5
Wanted a change	11.5	18.6	13.7	7.6	5.7	*	*	30.1
Study	*	18.1	17.4	*	*	*	*	21.1
Own health or medical reasons	32.5	15.2	13.6	14.0	8.6	8.0	*	47.7
Retired	16.0	5.3	*	*	*	*	12.2	21.3
Personal or family reasons	95.2	29.1	40.0	54.0	20.6	7.0	*	124.3
Other reasons	14.6	10.0	6.1	7.8	5.7	*	*	24.6
Total	417.2	357.9	308.4	229.9	131.9	68.4	36.6	775.1
PERSONS								
Business changed location(a)	53.3	20.5	11.4	23.2	22.7	11.0	5.7	73.9
Better business or job(b)	161.9	151.5	124.6	106.7	60.3	18.1	*	313.4
Promotion or transfer(c)	84.2	63.5	43.7	55.4	33.9	11.0	*	147.7
Business closed	46.1	28.6	16.9	20.8	16.1	14.2	6.8	74.7
Laid off: no work	81.0	93.7	79.7	43.6	26.3	17.2	7.9	174.8
Laid off: other reasons	35.3	62.9	56.9	21.9	7.6	7.5	*	98.2
Fixed term job(d)	76.5	77.0	60.2	47.4	25.4	12.7	7.8	153.5
Holiday or seasonal work	29.4	46.2	39.9	17.6	7.7	8.1	*	75.6
Unsatisfactory conditions(e)	65.7	65.2	51.8	42.0	26.0	8.6	*	130.9
Wanted a change	29.3	37.1	25.5	19.9	13.6	5.6	*	66.4
Study	5.9	38.9	35.8	7.0	*	*	*	44.8
Own health or medical reasons	60.4	27.3	19.8	21.2	14.3	14.7	17.7	87.7
Retired	47.7	10.1	*	*	*	*	45.3	57.8
Personal or family reasons	117.9	48.3	54.6	67.9	28.3	10.3	5.1	166.2
Other reasons	29.3	20.4	12.8	15.2	11.6	5.6	*	49.6
Total	923.8	791.5	634.6	512.6	298.4	150.7	119.0	1,715.3

For footnotes (a) to (e) see Table 12.

**TABLE 16. PERSONS WHO LEFT A JOB DURING THE YEAR ENDING FEBRUARY 1985:
DURATION OF JOB LEFT AND AGE
(' 000)**

Duration of job left	Age group (years)							Total
	15-19	20-24	25-34	35-44	45-54	55-59	60 and over	
MALES								
Under 3 months	60.6	52.7	55.4	20.8	10.3	*	*	207.8
3 and under 6 months	19.3	28.4	30.5	15.9	5.7	*	*	103.4
6 and under 12 months	23.3	33.5	47.2	20.1	8.2	*	*	135.8
<i>Total under 1 year</i>	<i>103.1</i>	<i>114.7</i>	<i>133.1</i>	<i>56.8</i>	<i>24.2</i>	<i>7.6</i>	<i>7.6</i>	<i>447.1</i>
1 and under 2 years	13.9	25.6	40.7	21.0	9.7	*	*	114.8
2 and under 3 years	7.8	18.0	33.3	16.8	8.4	*	*	89.8
3 and under 5 years	8.2	20.9	36.0	21.8	10.2	*	5.2	104.6
5 and under 10 years	*	13.9	27.6	26.3	12.4	4.8	8.3	93.4
10 years and over	..	*	12.0	23.8	17.4	11.3	26.2	90.5
<i>Total</i>	<i>133.1</i>	<i>193.1</i>	<i>282.7</i>	<i>166.5</i>	<i>82.3</i>	<i>31.0</i>	<i>51.5</i>	<i>940.2</i>
MARRIED FEMALES								
Under 3 months	*	13.4	39.5	26.5	13.5	*	*	100.3
3 and under 6 months	*	10.2	15.1	10.3	5.0	*	*	43.7
6 and under 12 months	*	10.7	18.7	13.9	5.9	*	*	50.3
<i>Total under 1 year</i>	<i>6.1</i>	<i>34.3</i>	<i>73.2</i>	<i>50.7</i>	<i>24.3</i>	<i>5.2</i>	<i>*</i>	<i>194.4</i>
1 and under 2 years	*	8.2	22.8	11.5	5.3	*	*	49.1
2 and under 3 years	*	6.2	16.3	9.6	*	*	*	38.6
3 and under 5 years	*	8.0	24.6	12.5	6.2	*	*	54.6
5 and under 10 years	*	5.7	18.2	14.2	9.3	*	*	51.6
10 years and over	..	*	*	8.2	7.9	*	4.7	28.9
<i>Total</i>	<i>8.7</i>	<i>62.4</i>	<i>159.1</i>	<i>106.7</i>	<i>56.7</i>	<i>15.0</i>	<i>8.6</i>	<i>417.2</i>
ALL FEMALES								
Under 3 months	53.7	40.9	56.5	31.8	16.2	*	*	204.2
3 and under 6 months	24.4	29.8	26.8	12.3	5.7	*	*	100.8
6 and under 12 months	22.5	32.2	25.3	17.5	6.4	*	*	106.1
<i>Total under 1 year</i>	<i>100.6</i>	<i>103.0</i>	<i>108.6</i>	<i>61.6</i>	<i>28.3</i>	<i>7.1</i>	<i>*</i>	<i>411.1</i>
1 and under 2 years	17.3	23.0	33.4	15.6	6.8	*	*	98.3
2 and under 3 years	10.1	16.5	26.6	13.1	5.3	*	*	73.0
3 and under 5 years	*	22.4	33.6	15.9	7.7	*	*	88.0
5 and under 10 years	*	11.5	23.0	16.5	10.6	*	*	67.5
10 years and over	..	*	4.7	9.2	9.7	6.1	7.6	37.3
<i>Total</i>	<i>132.1</i>	<i>176.3</i>	<i>229.9</i>	<i>131.9</i>	<i>68.4</i>	<i>21.5</i>	<i>15.0</i>	<i>775.1</i>
PERSONS								
Under 3 months	114.2	93.6	111.9	52.5	26.4	8.1	5.3	412.1
3 and under 6 months	43.7	58.3	57.3	28.2	11.4	*	*	204.2
6 and under 12 months	45.7	65.8	72.5	37.6	14.7	*	*	241.9
<i>Total under 1 year</i>	<i>203.7</i>	<i>217.7</i>	<i>241.7</i>	<i>118.3</i>	<i>52.5</i>	<i>14.7</i>	<i>9.6</i>	<i>858.1</i>
1 and under 2 years	31.2	48.7	74.2	36.6	16.4	*	*	213.1
2 and under 3 years	18.0	34.5	59.9	29.9	13.7	*	*	162.7
3 and under 5 years	12.1	43.2	69.7	37.7	17.9	5.5	6.4	192.6
5 and under 10 years	*	25.4	50.6	42.8	23.0	7.6	11.3	160.9
10 years and over	..	*	16.6	33.0	27.1	17.4	33.8	127.8
<i>Total</i>	<i>265.2</i>	<i>369.4</i>	<i>512.6</i>	<i>298.4</i>	<i>150.7</i>	<i>52.5</i>	<i>66.5</i>	<i>1,715.3</i>

TABLE 17. PERSONS WHO LEFT A JOB DURING THE YEAR ENDING FEBRUARY 1985:
DURATION OF JOB LEFT AND EDUCATIONAL ATTAINMENT
(' 000)

Duration of job left	With post-school qualifications			Without post-school qualifications				Total (c)
	Degree	Trade; technical or other certificate	Total (a)	Attended highest secondary level	Did not attend highest level of secondary school and left at age (years)		Total (b)	
					16 or over	15 or under		
MALES								
Under 3 months	13.3	48.8	64.0	41.2	35.1	52.9	129.7	207.8
3 and under 6 months	5.8	27.9	36.0	17.0	19.5	28.6	65.1	103.4
6 and under 12 months	11.9	40.7	54.3	22.5	25.4	29.9	77.9	135.8
<i>Total under 1 year</i>	<i>31.0</i>	<i>117.4</i>	<i>154.3</i>	<i>80.7</i>	<i>80.0</i>	<i>111.4</i>	<i>272.6</i>	<i>447.1</i>
1 and under 2 years	15.0	39.1	55.5	17.9	17.0	22.3	57.4	114.8
2 and under 3 years	11.4	32.2	44.5	10.2	14.7	20.1	45.0	89.8
3 and under 5 years	12.4	41.8	55.5	16.7	12.9	18.9	48.5	104.6
5 and under 10 years	11.4	35.8	47.9	9.2	14.2	21.9	45.5	93.4
10 years and over	9.8	29.6	40.2	7.8	7.5	34.8	50.3	90.5
<i>Total</i>	<i>91.1</i>	<i>296.0</i>	<i>398.0</i>	<i>142.5</i>	<i>146.3</i>	<i>229.3</i>	<i>519.4</i>	<i>940.2</i>
FEMALES								
Under 3 months	14.3	56.4	74.5	29.4	34.0	51.2	114.6	204.2
3 and under 6 months	4.6	27.8	34.2	16.3	25.6	22.8	64.6	100.8
6 and under 12 months	7.1	29.3	40.0	17.2	21.5	23.7	62.4	106.1
<i>Total under 1 year</i>	<i>25.9</i>	<i>113.5</i>	<i>148.7</i>	<i>62.9</i>	<i>81.1</i>	<i>97.7</i>	<i>241.6</i>	<i>411.1</i>
1 and under 2 years	10.7	32.6	44.5	12.0	18.2	21.7	51.8	98.3
2 and under 3 years	*	23.7	28.5	11.3	15.8	17.3	44.5	73.0
3 and under 5 years	8.0	30.9	40.6	10.8	16.2	20.2	47.4	88.0
5 and under 10 years	5.2	18.5	24.8	6.7	12.0	23.6	42.6	67.5
10 years and over	*	9.8	11.7	*	*	18.3	25.6	37.3
<i>Total</i>	<i>55.5</i>	<i>229.0</i>	<i>298.9</i>	<i>106.6</i>	<i>147.6</i>	<i>198.8</i>	<i>453.5</i>	<i>775.1</i>
PERSONS								
Under 3 months	27.6	105.2	138.5	70.6	69.1	104.1	244.3	412.1
3 and under 6 months	10.4	55.6	70.2	33.3	45.0	51.3	129.6	204.2
6 and under 12 months	19.0	70.0	94.3	39.8	46.9	53.6	140.3	241.9
<i>Total under 1 year</i>	<i>57.0</i>	<i>230.9</i>	<i>303.1</i>	<i>143.6</i>	<i>161.1</i>	<i>209.0</i>	<i>514.2</i>	<i>858.1</i>
1 and under 2 years	25.7	71.7	100.0	29.9	35.2	44.0	109.2	213.1
2 and under 3 years	15.8	55.9	73.0	21.6	30.5	37.5	89.5	162.7
3 and under 5 years	20.4	72.8	96.1	27.5	29.0	39.1	95.9	192.6
5 and under 10 years	16.6	54.3	72.8	15.9	26.2	45.5	88.1	160.9
10 years and over	11.2	39.4	51.9	10.7	11.8	53.1	75.9	127.8
<i>Total</i>	<i>146.6</i>	<i>525.0</i>	<i>696.8</i>	<i>249.1</i>	<i>293.8</i>	<i>428.2</i>	<i>972.9</i>	<i>1,715.3</i>

(a) Includes persons with other post-school qualifications. (b) Includes persons who never went to school. (c) Includes persons aged 15 to 20 years still at school.

TABLE 18. PERSONS WHO HAD A JOB AT FEBRUARY 1985 : DURATION OF CURRENT JOB AND AGE
(' 000)

Duration of current job	Age group (years)								Total
	15-19	20-24	25-34	35-44	45-54	55-59	60-64	65 and over	
MALES									
Under 3 months	97.3	76.3	99.0	56.7	26.7	7.4	*	*	368.0
3 and under 6 months	27.3	35.1	61.9	35.8	15.7	*	*	*	182.3
6 and under 12 months	42.3	58.7	96.3	67.5	26.0	6.1	*	*	299.9
Total under 1 year	167.0	170.1	257.3	160.0	68.4	17.1	7.9	*	850.2
1 and under 2 years	80.8	87.6	150.4	90.8	44.4	13.4	5.3	*	474.2
2 and under 3 years	38.1	56.6	132.0	94.8	38.0	19.1	6.0	*	386.6
3 and under 5 years	38.5	120.2	204.9	153.0	82.6	26.2	14.2	5.1	644.7
5 and under 10 years	*	89.3	240.0	223.9	129.4	48.2	26.5	8.5	766.7
10 years and over	..	*	129.2	269.6	307.8	149.2	82.2	38.9	977.9
Total	325.3	524.6	1,113.7	992.1	670.6	273.2	142.1	58.5	4,100.3
FEMALES									
Under 3 months	79.9	61.6	77.2	42.9	17.5	4.5	*	*	283.8
3 and under 6 months	33.8	40.9	46.5	30.0	11.2	*	*	*	165.3
6 and under 12 months	46.3	47.9	71.9	39.9	15.7	4.6	*	*	226.7
Total under 1 year	160.0	150.5	195.7	112.8	44.4	10.4	*	*	675.8
1 and under 2 years	71.4	76.7	111.3	81.4	24.4	6.1	*	*	371.3
2 and under 3 years	39.2	57.2	79.9	63.6	28.4	5.5	*	*	277.5
3 and under 5 years	28.6	96.7	122.5	117.5	60.6	13.9	*	*	445.7
5 and under 10 years	*	54.8	130.6	137.4	89.4	21.2	9.5	*	446.8
10 years and over	..	*	43.3	98.8	121.2	48.8	23.6	13.5	349.3
Total	300.4	436.0	683.3	611.4	368.4	103.8	43.5	19.6	2,566.3

TABLE 19. PERSONS WHO HAD A JOB AT FEBRUARY 1985: DURATION OF CURRENT JOB AND EDUCATIONAL ATTAINMENT
(' 000)

Duration of current job	Without post-school qualifications								Total (c)
	With post-school qualifications			Attended highest secondary level	Did not attend highest level of secondary school and left at age (years)		Total (b)	Total (c)	
	Degree	Trade; technical or other certificate	Total (a)		16 or over	15 or under			
MALES									
Under 3 months		40.1	98.2	141.9	71.1	63.9	80.1	215.2	368.0
3 and under 6 months		16.7	57.9	78.3	28.7	32.1	38.4	99.5	182.3
6 and under 12 months		30.3	99.3	132.7	47.5	50.3	64.3	162.1	299.9
Total under 1 year		87.1	255.4	352.8	147.3	146.3	182.8	476.9	850.2
1 and under 2 years		53.1	147.9	206.8	78.1	82.7	93.8	255.2	474.2
2 and under 3 years		52.0	137.6	194.6	42.6	63.1	81.7	187.7	386.6
3 and under 5 years		77.0	224.6	310.2	83.7	99.3	147.4	330.9	644.7
5 and under 10 years		74.7	306.6	390.7	83.8	100.0	191.4	375.9	766.7
10 years and over		93.0	344.1	446.0	73.9	84.5	370.6	531.9	977.9
Total		436.8	1,416.2	1,901.3	509.3	576.0	1,067.7	2,158.5	4,100.3
FEMALES									
Under 3 months		30.7	78.6	114.5	48.8	48.3	57.8	155.1	283.8
3 and under 6 months		6.5	54.8	64.7	22.0	32.9	37.7	92.6	165.3
6 and under 12 months		18.0	68.4	91.2	31.9	42.4	52.5	126.9	226.7
Total under 1 year		55.2	201.8	270.4	102.7	123.6	148.0	374.5	675.8
1 and under 2 years		36.9	112.6	156.2	50.6	57.5	93.9	202.0	371.3
2 and under 3 years		30.4	81.0	116.7	45.6	48.8	60.4	154.9	277.5
3 and under 5 years		46.3	132.5	185.9	56.8	82.1	118.8	257.7	445.7
5 and under 10 years		42.3	135.3	184.1	49.6	77.7	135.1	262.7	446.8
10 years and over		22.7	96.3	122.8	30.1	46.0	149.7	226.5	349.3
Total		233.9	759.5	1,036.0	335.5	435.7	706.0	1,478.3	2,566.3

(a) Includes persons with other post-school qualifications. (b) Includes persons who never went to school. (c) Includes persons aged 15 to 20 years still at school.

TABLE 20. PERSONS WHO HAD A JOB AT FEBRUARY 1985: DURATION OF CURRENT JOB AND INDUSTRY OF CURRENT JOB (' 000)

Duration of current job	Industry of current job										Total
	Agriculture, forestry, fishing and hunting	Manufacturing	Construction	Wholesale and retail trade	Transport and storage	Finance, property and business services	Public administration and defence	Community services	Recreation, personal and other services	Other(a)	
Under 3 months	32.3	87.7	55.6	146.9	24.8	68.7	23.7	112.4	69.6	30.0	651.8
3 and under 6 months	9.1	47.2	21.4	99.4	21.0	40.6	15.1	46.3	35.4	12.0	347.5
6 and under 12 months	15.7	102.4	37.7	126.6	22.4	57.4	27.3	77.5	39.8	19.8	526.6
Total under 1 year	57.1	237.3	114.7	372.9	68.2	166.8	66.1	236.3	144.9	61.9	1,526.0
1 and under 2 years	27.0	140.8	55.5	208.0	40.8	94.7	32.5	154.3	65.0	26.9	845.5
2 and under 3 years	25.9	93.4	45.9	132.5	32.6	80.1	36.9	137.7	49.6	29.5	664.1
3 and under 5 years	44.8	189.8	78.1	213.6	57.8	118.2	54.8	197.4	70.5	65.4	1,090.4
5 and under 10 years	78.6	236.0	81.3	207.6	73.5	98.5	63.5	232.4	61.0	81.0	1,213.4
10 years and over	189.0	277.3	100.8	163.6	95.3	86.4	67.8	192.4	44.7	109.9	1,327.2
Total	422.3	1,174.5	476.3	1,298.3	368.2	644.7	321.5	1,150.5	435.7	374.6	6,666.6

(a) Includes mining; electricity, gas and water; and communication.

TABLE 21. PERSONS WHO HAD A JOB AT FEBRUARY 1985: DURATION OF CURRENT JOB AND OCCUPATION OF CURRENT JOB (' 000)

Duration of current job	Occupation of current job								Total
	Professional, technical etc.	Administrative, executive and managerial	Clerical	Sales	Farmers, fishers, timber-getters etc.	Transport and communication	Tradespersons, etc.(a)	Service, sport and recreation	
Under 3 months	105.7	23.1	114.6	74.9	37.8	25.7	190.9	79.1	651.8
3 and under 6 months	36.5	22.8	76.4	47.5	11.0	17.1	89.0	47.2	347.5
6 and under 12 months	71.8	31.6	108.7	62.6	19.3	21.4	150.9	60.5	526.6
Total under 1 year	214.0	77.5	299.7	184.9	68.0	64.2	430.8	186.8	1,526.0
1 and under 2 years	131.7	56.6	165.4	104.6	33.3	35.4	225.6	92.9	845.5
2 and under 3 years	125.4	46.9	131.2	65.7	31.0	32.3	160.7	71.0	664.1
3 and under 5 years	187.2	74.6	216.4	95.7	53.7	51.5	311.0	100.4	1,090.4
5 and under 10 years	194.0	88.9	221.9	84.4	87.8	69.1	355.1	112.1	1,213.4
10 years and over	195.6	111.4	176.3	58.3	190.7	85.4	413.5	96.0	1,327.2
Total	1,047.9	455.8	1,210.9	593.6	464.5	337.9	1,896.7	659.3	6,666.6

(a) Includes miners and quarry workers, trades and production-process workers and labourers, n.e.c.

ADDITIONAL TABLES

The following is a list of additional tables of results from this survey which are available to users on request. These tables show a selection of estimates on an Australia-wide basis. Tables disaggregated by State/Territory and other tables may also be available. All tables are dissected by sex.

Persons who had a job at February 1985

Duration of current job, age and family status
Duration of current job, industry of current job and age

Persons who worked at some time during the year ending February 1985

Number of location changes, family status, birthplace and year of arrival (for persons born overseas)
Number of location changes, age, birthplace and period of arrival (for persons born overseas)
Number of location changes, marital status, birthplace and period of arrival (for persons born overseas)
Number of employers or businesses during the year, age and family status
Number of employers or businesses during the year, number or location changes, labour force status at February 1985 and marital status

Persons who left a job during the year ending February 1985

Reason for leaving job, age and family status
Reason for leaving job, age and labour force status at February 1985
Reason for leaving job, marital status, birthplace and period of arrival (for persons born overseas)
Reason for leaving job, age, birthplace and period of arrival (for persons born overseas)
Reason for leaving job, family status, birthplace and period of arrival (for persons born overseas)
Reason for leaving job, industry of current job (if any), birthplace and period of arrival (for persons born overseas)
Reason for leaving job, occupation of current job (if any), birthplace and period of arrival (for persons born overseas)
Reason for leaving job, occupation of current job (if any), age and educational attainment
Reason for leaving job, family status and industry of job left
Reason for leaving job, family status and occupation of job left
Duration of job left, age, birthplace and period of arrival (for persons born overseas)
Duration of job left, age and family status
Full-time/part-time status of previous job, age, family status and full-time/part-time status of current job (if any)
Number of location changes, occupation of job left and marital status
Industry of previous job and number of employers or businesses during the year
Occupation of previous job and number of employers or businesses during the year

Persons who had a job at February 1985 and who changed jobs during the year ending February 1985

Labour mobility and occupation of current job
Duration of previous job, industry of current job, birthplace and period of arrival (for persons born overseas)
Duration of previous job and occupation of current job
Duration of previous job, industry of previous job and industry of current job
Duration of previous job and age (also available for persons looking for work and persons out of the labour force at February 1985)
Duration of current job and full-time/part-time status of previous job
Occupation of previous job and occupation of current job
Whether changed industry division, age, birthplace and period of arrival (for persons born overseas)
Whether changed major occupation group, age, birthplace and period of arrival (for persons born overseas)
Industry of previous job, industry of current job, birthplace and period of arrival (for persons born overseas)
Industry of previous job, occupation of current job, birthplace and period of arrival (for persons born overseas)
Occupation of previous job, industry of current job, birthplace and period of arrival (for persons born overseas)
Occupation of previous job, occupation of current job, birthplace and period of arrival (for persons born overseas)

TECHNICAL NOTE

Estimation procedure

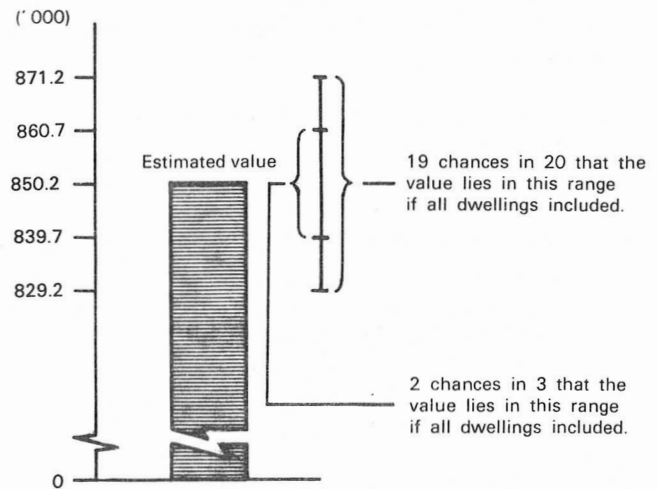
The estimates are derived from the population survey by use of a ratio estimation procedure which ensures that the estimates conform to an independently estimated distribution of the population for each capital city and remainder of State by age and sex, rather than to the corresponding distribution within the sample itself.

Reliability of the estimates

2. Since the estimates in this publication are based on information obtained from occupants of a sample of dwellings, they are subject to sampling variability; that is, they may differ from the figures that would have been produced if all dwellings had been included in the survey. One measure of the likely difference is given by the *standard error*, which indicates the extent to which an estimate might have varied by chance because only a sample of dwellings was included. There are about two chances in three that a sample estimate will differ by less than one standard error from the figure that would have been obtained if all dwellings had been included, and about nineteen chances in twenty that the difference will be less than two standard errors. Another measure of the likely difference is the *relative standard error*, which is obtained by expressing the standard error as a percentage of the estimate.

3. Space does not allow for the separate indication of the standard errors of all estimates in this publication. A table of standard errors for general application is given on the following page. Since they are averages based on calculations for a limited number of past surveys over a wide range of labour force characteristics, these figures will not give a precise measure of the standard error of a particular estimate but they will provide an indication of its magnitude.

4. An example of the calculation and the use of standard errors in relation to estimates of persons is as follows. From Table 19 on page 19, the estimated number of males who, in February 1985, had been in their current job for less than one year is 850,200. Since this estimate is between 500,000 and 1,000,000 in the standard error table, the standard error for Australia will be between 8,700 and 11,200 and can be approximated as 10,500 (rounded to the nearest 100). Therefore, there are about two chances in three that the value that would have been produced if all dwellings had been included in the survey will fall in the range 839,700 to 860,700 and about nineteen chances in twenty that the value will fall within the range 829,200 to 871,200. This example is illustrated in the following diagram.



5. As can be seen from the standard error table, *the smaller the estimate the higher is the relative standard error*. Very small estimates are thus subject to such high standard errors (relative to the size of the estimate) as to detract seriously from their value for most reasonable uses. In the tables in this publication, estimates less than the lowest levels shown in the standard error table have not been published. Although figures for these small components can in some cases be derived by subtraction, they should not be regarded as reliable.

6. Proportions and percentages formed from the ratio of two estimates are also subject to sampling error. The size of the error depends on the accuracy of both the numerator and the denominator. The formula for the relative standard error (RSE) of a proportion is given below:

$$\text{RSE } (x/y) = \sqrt{[\text{RSE } (x)]^2 + [\text{RSE } (y)]^2}$$

7. Considering the example from paragraph 4, the 850,200 males represent 20.7 per cent of the 4,100,300 males working at February 1985. The standard error of 4,100,300 is approximately 17,600 so the relative standard error is 0.4 per cent. The relative standard error for 850,200 is 1.2 per cent. Applying the above formula, the relative standard error of the proportion is $\sqrt{(1.2)^2 + (0.4)^2}$ or 1.1 per cent, giving a standard error for the proportion (20.7 per cent) of 0.2 percentage points. Therefore, there are about two chances in three that the proportion of males who had been in their current job for less than one year is between 20.5 per cent and 20.9 per cent and nineteen chances in twenty the proportion is within the range 20.3 per cent to 21.1 per cent.

8. Published figures may also be used to estimate the difference between two survey estimates (of numbers or percentages). Such a figure is itself an estimate and is therefore subject to sampling error. The sampling error of the difference between two estimates depends on their standard errors and the relationship (correlation) between them. An approximate standard error (SE) of the difference between two estimates (x-y) may be calculated by the following formula:

$$SE(x-y) = \sqrt{[SE(x)]^2 + [SE(y)]^2}$$

While this formula will only be exact for differences between separate and uncorrelated characteristics or subpopulations it is expected to provide a good approximation for all differences likely to be of interest in this publication.

9. The imprecision due to sampling variability, which is measured by the standard error, should not be confused with inaccuracies that may occur because of imperfections in reporting by interviewers and respondents and errors made in the coding and processing of data. Inaccuracies of this kind are referred to as the *non-sampling error*, and they may occur in any enumeration, whether it be a full count or only a sample.

STANDARD ERRORS OF ESTIMATES

Size of estimate (persons)	N.S.W.	Vic.	Qld	S.A.	W.A.	Tas.	N.T.	A.C.T.	Australia	
									Relative standard error (per cent)	
1,500						350				
1,800						380		410		
2,000						400	490	420		
2,500				580	620	440	540	460		
3,000				630	670	470	580	490		
3,500			860	680	720	500	610	520		
4,000			920	720	760	530	650	550		
4,500			970	760	800	560	680	570		
5,000	1,200	1,250	1,000	790	840	580	710	590	1,050	23.9
6,000	1,350	1,350	1,100	860	900	630	760	630	1,250	20.7
7,000	1,450	1,450	1,200	910	970	670	800	670	1,350	19.2
10,000	1,700	1,700	1,400	1,150	1,100	770	920	750	1,600	16.0
20,000	2,300	2,250	1,900	1,400	1,500	990	1,200	940	2,250	11.1
50,000	3,350	3,300	2,700	1,950	2,100	1,350	1,650	1,200	3,400	6.8
100,000	4,450	4,300	3,550	2,500	2,700	1,650	2,100	1,450	4,550	4.6
200,000	5,900	5,500	4,550	3,150	3,400	2,050		1,700	6,100	3.0
300,000	6,800	6,300	5,200	3,600	3,850				7,100	2.4
500,000	8,300	7,500	6,100	4,200	4,500				8,700	1.7
1,000,000	10,600	9,300	7,600						11,200	1.1
2,000,000	13,400	11,400							14,200	0.7
5,000,000	18,000	14,600							19,100	0.4
10,000,000									23,500	0.2

Estimates below the levels indicated have not been published, see paragraph 5 above.

